

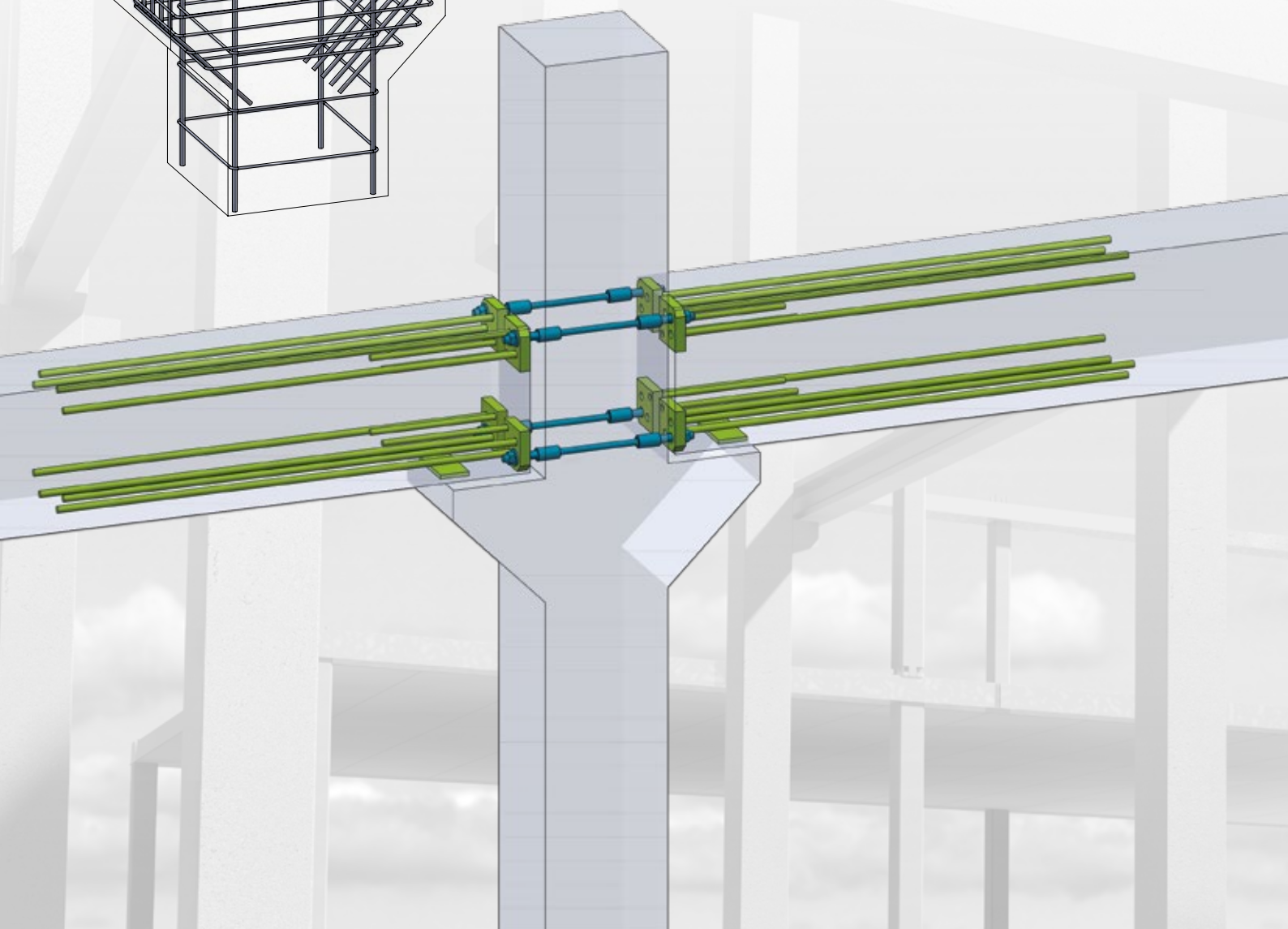
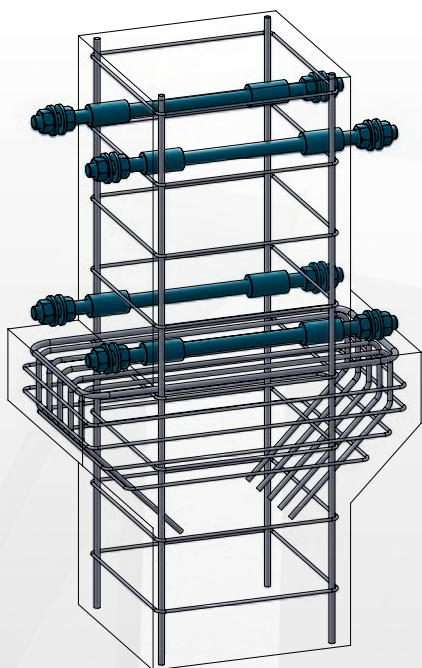


# NEW EFFECTIVE BEAM-TO-COLUMN CONNECTION

## FOR PRECAST CONCRETE FRAMES

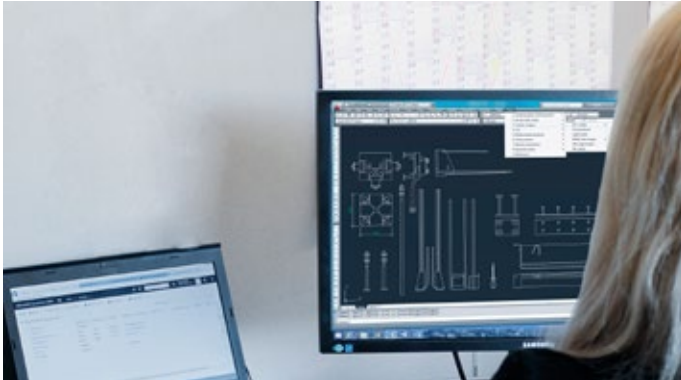
The bolted connection is made by the  
**COPRA Anchoring Couplers** and **BECO Beam Shoes**

- Instantly moment-resisting connection
- Simple and rapid installation process





# CHOOSE THE BEST BEAM-TO-COLUMN CONNECTION **BECO-COPRA**



## **Instantly moment-resisting connection**

- A tensile-resistant connection is formed as soon as the nuts are tightened
- Less supplementary reinforcement is required when COPRA is used
- COPRA can be used in narrow-width columns when using bent rebars



## **Simple-shaped precast components**

- Connection makes it possible to use simple-shaped precast elements
- Protruding details are completely avoided until the connection is made, easy production, handling and transportation of precast elements
- Low-volume grouting sections

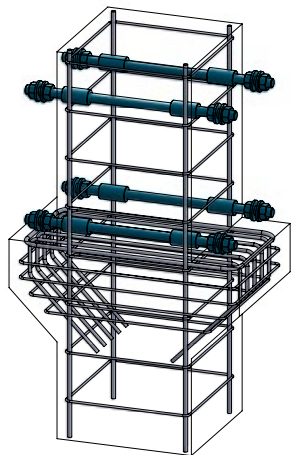


## **Advanced installation process**

- Low risk of personal injury during the process of handling precast elements
- Low risk of damaging the connection with removable threaded bars
- Fast installation as the connection does not require on-site welding

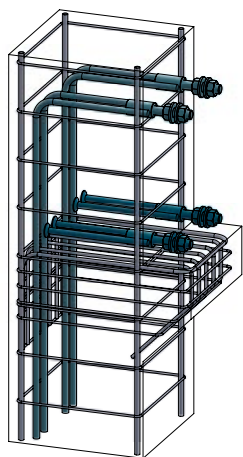
## COPRA Anchoring Coupler

Model range and application



COPRA Anchoring Couplers

- double-sided beam-to-column connection



COPRA Anchoring Couplers

- single-sided beam-to-column connection

**COPRA P** Anchoring Coupler with straight anchor bar(s)



**COPRA L** Anchoring Coupler with headed anchor bar(s)



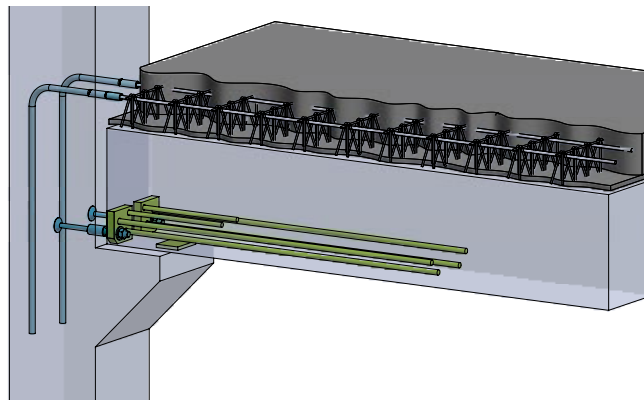
**COPRA D** Anchoring Coupler with double-sided arrangement



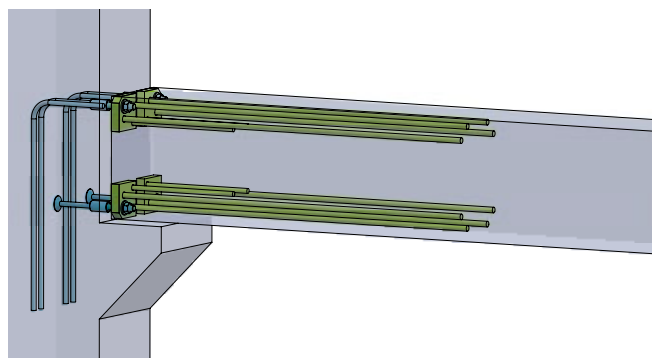
## BECO Beam Shoe

Model range and application

Partially precast concrete connection



Precast concrete connection



**BECO Beam Shoes**



More information about COPRA and BECO at  
[www.peikko.com](http://www.peikko.com)

More information at  
[www.peikko.com](http://www.peikko.com)



BECO



COPRA

