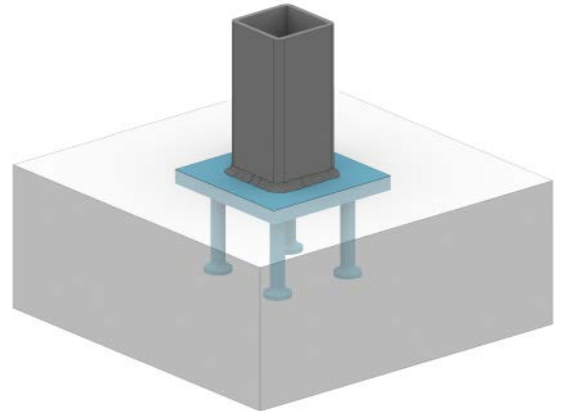


WELDA® and WELDA® Strong

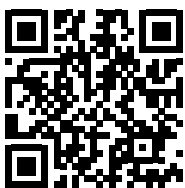
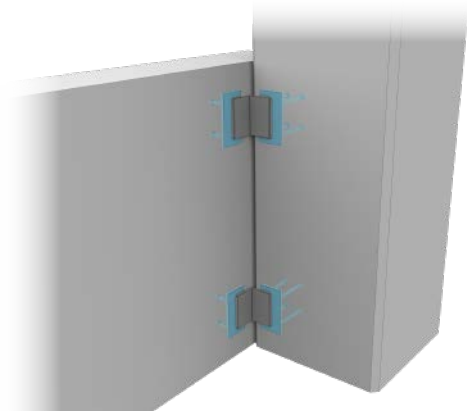
Anchor Plates for Welded Connections between Steel and Concrete Structures

- CE mark based on European Technical Assessment ETA-16/0430 offers the easiest way to demonstrate conformity to requirements set by authorities
- Fluent, efficient and reliable to design thanks to free Peikko Designer®: Anchor Plate software
- Wide range of standard solutions to transfer all kind of loads:
- WELDA® Anchor Plates are for moderate and medium loads in shallow structures
- WELDA® Strong Anchor Plates are used in deeper structures to transfer heavy loads
- Can easily be modified to project specific requirements
- Multitude of material options offer an optimized solution even for the most demanding cases e.g. in industrial applications and maritime climate
- Shorter installation time e.g. in heavily reinforced constructions thanks to the light weight and easy assembly
- Possibility to avoid supplementary reinforcement thanks to increased anchorage depth



WELDA® Anchor Plates are purpose-designed building products used to create a welded connection between steel and concrete members. WELDA® Anchor Plates consist of a steel plate and headed studs embedded in concrete. The surface of the steel plate remains uncovered by concrete and thus creates a welding surface for the steel structure, allowing structural joints between steel and concrete. The headed studs anchor forces such as bending moments, normal and shear actions from other structures into the concrete members.

WELDA® and WELDA® Strong Anchor Plates cut down time needed for design work and assembly making the whole construction process faster and more efficient.



www.peikko.com