

# ARBOX® Joint Reinforcement

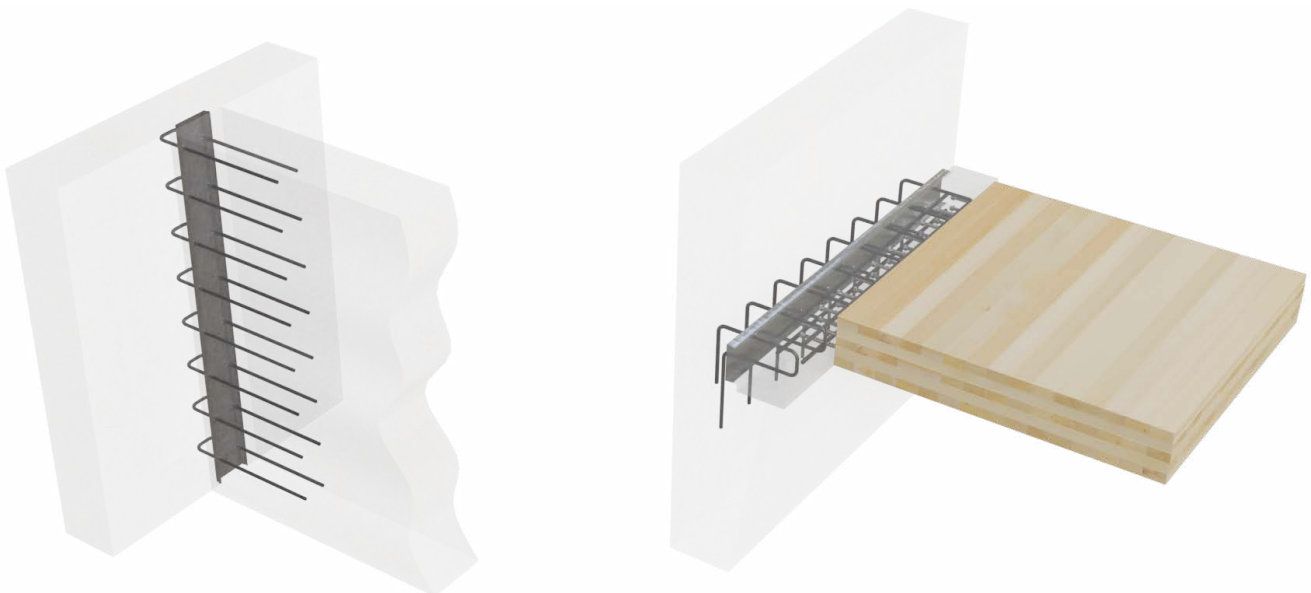
## Effective Rebar Connection for Concrete Structures

- Cost- and time-effective installation to the formwork
- Ensuring the continuity of reinforcement at connections between concrete components
- Simple formwork design and joint design
- Transfer of longitudinal and transverse shear forces to the joint
- Highest possible resistance class with rough and indented surfaces according to EN 1992-1-1, Section 6.2.5

ARBOX® Joint Reinforcement is a system for creating connections between concrete elements. The unit is used to simplify formwork at construction joint in reinforced concrete structures. Pre-bent rebars are installed into a galvanized steel box that can be easily attached to formwork without the need to drill holes or make other adjustments to the formwork.

Pre-bent rebars are straightened when required and the process can be continued by overlapping rebars with the main reinforcement of the connected concrete member. This system provides a high production speed with reliable quality for concrete connections in both cast-in-situ and precast structures, as well as for combinations of concrete and CLT materials.

ARBOX® is available in two different roughness's of the box. **Rough surface** as **ARBOX® Plus** in longitudinal direction, and **Indented surface** of the box as **ARBOX® Plus** in transverse direction and **ARBOX® Strong** in both directions, with various widths of the box from 45 mm up to 225 mm. Various shapes of the rebars with diameters of 8 mm, 10 mm and 12 mm, make this system highly versatile. The suitable ARBOX® Joint Reinforcement model can be easily selected by using tables in the ARBOX® Joint Reinforcement Technical manual based on required resistance and dimensions.



[www.peikko.com](http://www.peikko.com)