

# TERADOWEL and ULTRADOWEL

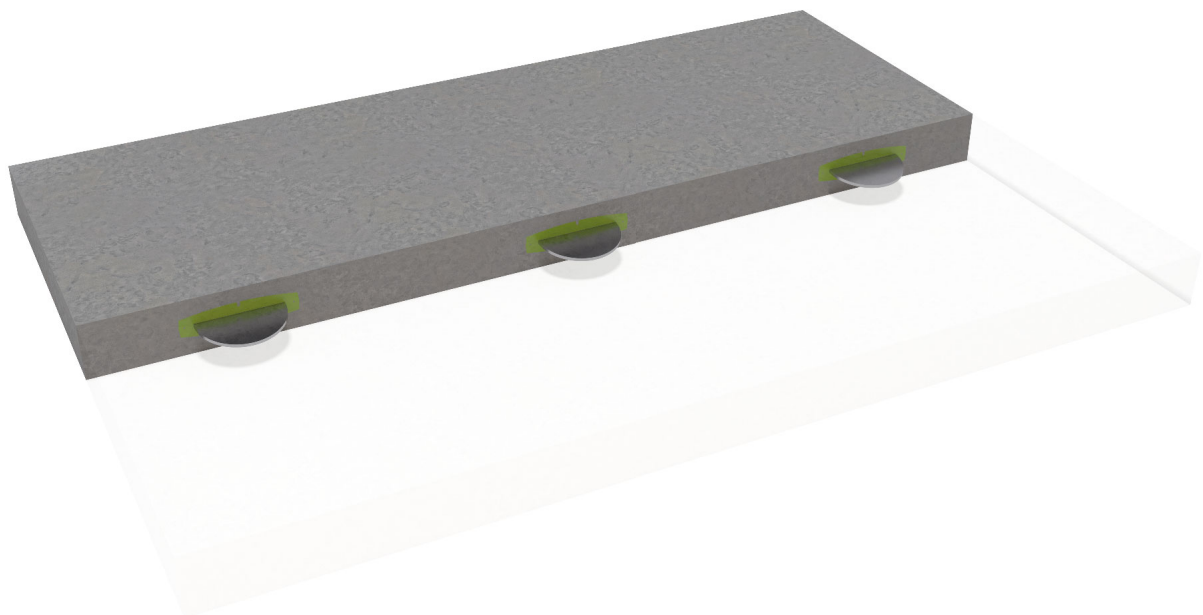
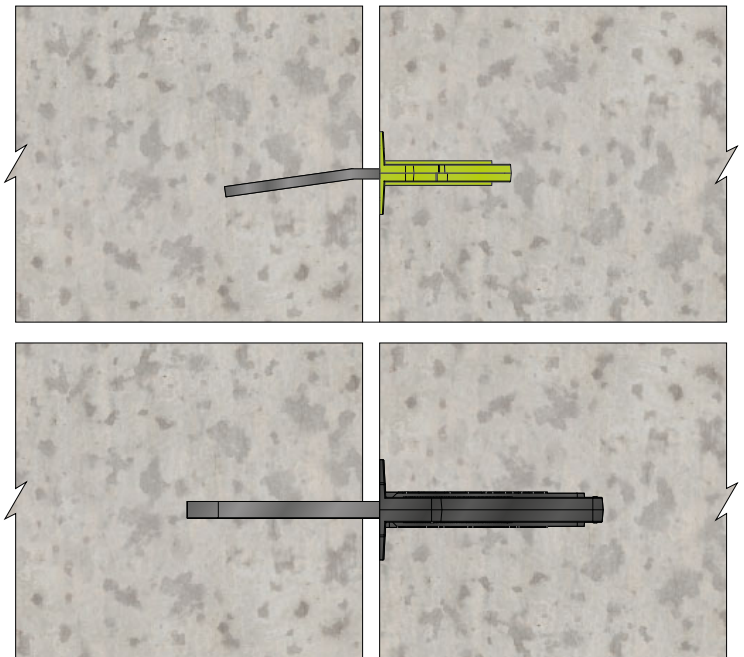
## Reliable Dowel System for Floor Joints

- Dowels manufactured from high strength carbon structural steel.
- Combined with rigid high-density thin wall plastic release sleeves.
- Optimized shape of dowels for maximal bearing, bending and punching shear resistance.
- Allows all directional movement in the horizontal slab plane, minimizes vertical deflection of the slab edges.
- Easy and fast installation.

A range of efficient plate dowel load transfer systems for contraction free movement joints designed for use with traditional methods of formed joint construction with timber formwork (construction joint). Available in Plain Steel, or Hot Dip Galvanized finish, for use in interior and exterior applications.

A highly economical system with class leading load transfer capabilities. It eliminates completely the risk of slab interlock, as often seen with conventional bar dowel load transfer system applications.

TERADOWELS and ULTRADOWELS are recommended to be used for joint openings up to 20 mm wide and are suitable for construction of all types of ground level floor slabs such as jointed or jointless, ground bearing and pile supported concrete floors.



[www.peikko.com](http://www.peikko.com)