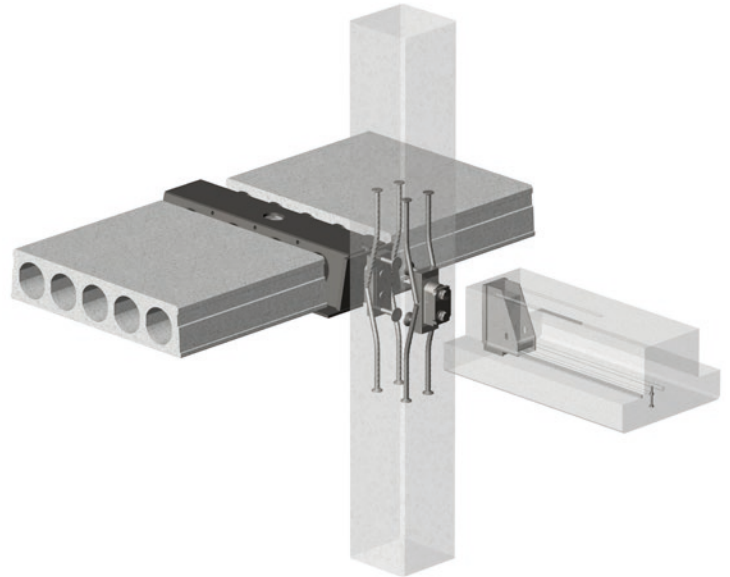


PCs® Corbel

Hidden Corbel for Supporting Beams

- Free up space below beams by using hidden corbels
- Easy formwork with constant column cross-section
- Corbel location is adjustable after casting the column
- Easy installation of beams

PCs® Corbel is a building product used as a vertical support between steel beams, composite steel-concrete beams like Peikko's DELTABEAM®, or reinforced concrete beams and reinforced concrete columns or walls. It consists of a steel corbel bolted to a fastening plate integrated into the column. The fastening plate is cast into the column together with the main reinforcement and the corbel plate is attached to the column only after the formwork is removed. The shape and material of the formwork may hide the corbel entirely.



PCs® is dimensioned so that the positioning of the corbel plate relative to the column plate may be rectified. After the corbel plate is bolted onto the column plate, PCs® is ready for use without any additional actions in the factory or on-site. The standard models of PCs® are designed to withstand vertical loads up to 1500 kN (335 kips). These resistances are guaranteed when PCs® supports steel, composite, and concrete beams. In addition to vertical resistance, torsion resistance is also guaranteed for PCs® supporting steel and composite beams.



www.peikkousa.com

www.peikko.ca