



PEIKKO GULF LLC COMPANY PROFILE

Peikko guides you towards a faster, safer and more efficient way to design and build.



Peikko Gulf LLC
Al Hamra Industrial Zone
Plot 259- 270
P.O. Box 86031
Ras Al Khaimah
United Arab Emirates
Tel. +971 7 2433 627

Visit our website to find out more about our references, detailed technical information on products, a complete product catalogue, technical manuals and downloadable design software and components.

www.peikko.ae

CONTENTS

Chairman's Message	3
Peikko Group Corporation	4
Peikko Gulf LLC - About us	5
Customer Value	
Company Ethics	
Our values define how we work, every day	
Targets	
Quality, environment and safety	
Focus on R&D	
Tools for Designers	
In-house manufacturing	7
Products and Solutions	8
Bolted Column Connections	
DELTABEAM® Slim Floor Structure	
Beam Connections	
Welded Connections	
Wall Connections	
Slab Openings	
Concrete Floor Products	
Punching Reinforcement	
Lifting and Transportation	
Clientele	13
References	14
Certificates	21
Industrial License	
Commercial License	
Civil Defense Certificate	
Industrial License from Department of Economic	
Insurance Certificate / ISO 3834 QMS Certificate	
ISO 3834 QMS Certificate (appendixes)	
ISO 9001 QMS Certificate	
ISO 14001 EMS Certificate	
ISO 45001 Certificate	
Environmental Compliance Certificate	
DCL DELTABEAM® Approval	
DCL Column Shoe Approval	
VAT Registration Certificate	
Contact Us	33



CHAIRMAN'S MESSAGE

“Our aim is to serve our customers locally with leading solutions in the field in terms of quality, safety and innovation. Peikko has a clear focus on regularly introducing new, tested innovative solutions and services. That is why our investments in Research and Development are among the highest in the field. “



A handwritten signature in blue ink, consisting of a stylized 'R' followed by a series of loops and a long horizontal stroke.

**Radovan Endel,
General Manager**

PEIKKO GROUP CORPORATION

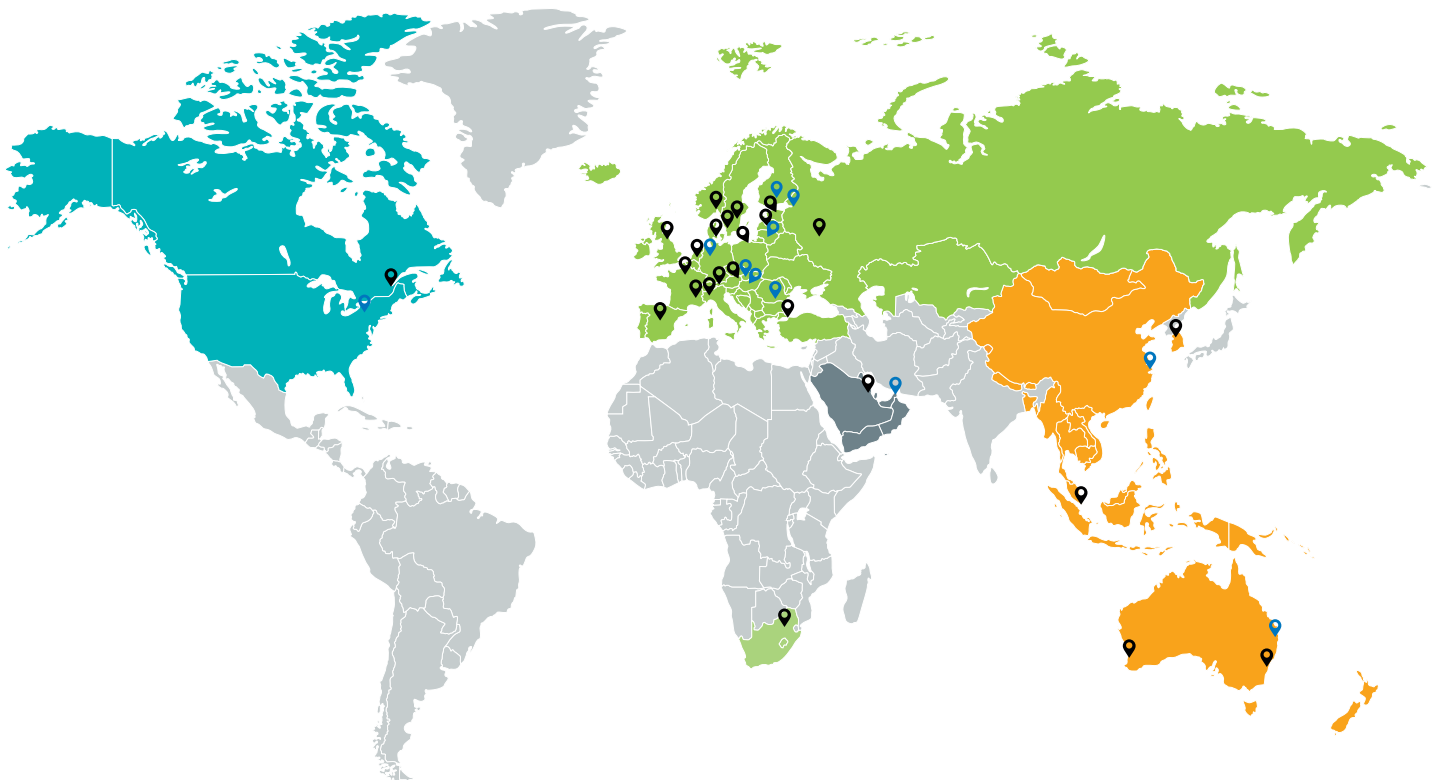
- CONCRETE CONNECTIONS SINCE 1965

Peikko Group was founded in 1965 and is headquartered in Lahti, Finland. Peikko is a leading global supplier of slim floor structures and connection technology for precast and cast-in-situ applications. Peikko's innovative solutions offer a faster, safer, and more efficient way to design and build.

Peikko has sales offices in over 30 countries in Asia-Pacific, Europe, Africa, the Middle East, and North America, with manufacturing operations in eleven countries. Peikko is a family-owned and managed company that employs over 1,800 professionals. Peikko generated a turnover of EUR 225 million in 2018.

Our aim is to serve you locally with leading solutions in terms of quality, safety and innovation. Peikko has a clear focus on regularly introducing new, tested innovative solutions and services. That is why our R&D investments are among the highest in the field.

Peikko Gulf LLC is Peikko Group's subsidiary in the Middle East and it is based in United Arab Emirates.



PEIKKO GULF LLC - ABOUT US

Peikko Gulf LLC started its operations in the Middle East in 2008. It is a joint venture formed by Peikko Group Corporation, a specialist in concrete connections and composite beam structures, and Rashed Abdul Rahman Al Rashed & Sons Group, a dynamic, leading trading and industrial conglomerate in Saudi Arabia. Peikko Group Corporation (Finland) is the majority shareholder in the joint venture.

Peikko has two sales offices in the Middle East; Peikko Gulf LLC in Ras Al Khaimah Industrial Area in the United Arab Emirates, and Al Rashed Peikko LLC in Dammam, in the Kingdom of Saudi Arabia. There is also a production unit in United Arab Emirates. Peikko Gulf LLC is a leading supplier in the GCC countries for the innovative solutions for precast element connections, cast-in-situ accessories and components, and integrated composite beams.

Peikko Gulf LLC is the sole representative of Peikko Group Corporation on the GCC region.

All the products of Peikko Group are pre-engineered and tested. The products have declared capacities and Peikko Group is carrying full liability for the declared values. Peikko's products and design are insured up to 10 million EUR.

CUSTOMER VALUE

Peikko aims to create value to its customers by having full control over its supply chain. All key products are manufactured in-house in modern and purpose-built efficient factories. We have regional warehousing in 15 locations, Saudi Arabia being one of them. Every transaction between the client and us creates added value on the client's part because Peikko Gulf LLC employs highly trained technical sales personnel and a team of experienced engineers in every region where it operates.



COMPANY ETHICS

We at Peikko Gulf LLC are committed to doing business in an ethical and sustainable manner. Our Code of Conduct provides us with common guidelines for future decisions. In addition to our employees, it gives all stakeholders a perspective about the company culture, its acceptable business practices, and its compliance with laws, standards, and regulations. Rather than to create new commitments, Peikko's Code of Conduct clarifies and documents our existing best practices.

OUR VALUES DEFINE HOW WE WORK, EVERY DAY



Meeting
customer
needs



Respecting
and trusting
each other



Aiming to
be better
every day



Seeking
profitable
growth

TARGETS

Based on Peikko's Values, our business strategy is to achieve a high level of customer satisfaction and profitable growth. We achieve this by continuously improving and by working in a respectful and trust-worthy manner. It is expected that every employee is aware of and complies with our ethical principles of business and human interaction at Peikko.

QUALITY, ENVIRONMENT AND SAFETY

Peikko Gulf is proud to be one of the companies with multisite ISO and OHSAS certifications. This means that our clients are assured the same level of quality in every unit they deal with. Peikko Gulf has certified Quality, Environmental, Health and Safety Management System according to ISO 9001:2015, ISO 14001:2015, ISO 45001:2018 and ISO 3834-2:2005.

Peikko's operations are based on localized and reliable customer service, excellence in R&D and manufacturing. This includes good co-operation with customers, other stakeholders and within society. Our overall aim is to consistently deliver high quality and to work in an environmentally aware manner. Peikko is committed to continuous improvement in health and safety of our employees, customers and contractors. We aim to excel in occupational health and safety performance and achieve an accident-free-operation. This is accomplished by focusing on our way of working - by putting safety first.

FOCUS ON R&D

Peikko introduces regularly new, tested innovative solutions and services. The investments made on R&D are among the highest in its field.

Peikko products run exhaustive product tests in major European universities. Our products are widely approved according to both international and local standards.

We also provide our customers with experienced Technical Support and offer our expertise on design whenever required. Besides of our professionals, we have also available online tools for Designers.

TOOLS FOR DESIGNERS

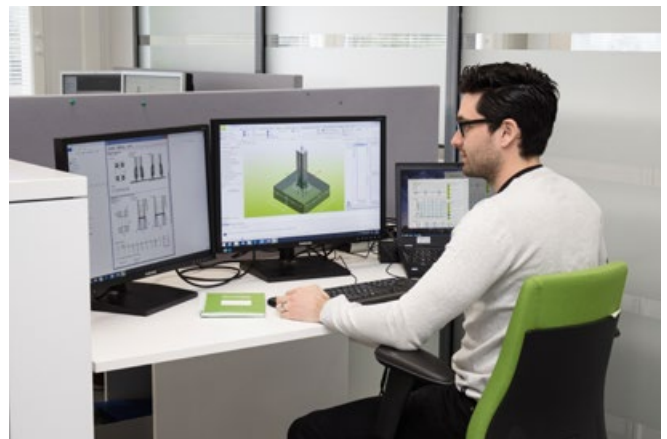
Peikko Designer® is Peikko's own design software to help you to select the most suitable Peikko product for your structure. Peikko Designer® is free for registered users.

The modern, intuitive user interface is based on interactive 3D graphics. As the software updates automatically, you will always benefit from the latest features. Peikko Designer® includes a wide range of European design norms, ACI 318-14 and several languages.

Peikko Designer® offers a range of benefits:

- Helps to select the most suitable Peikko product for the structure in question
- All design cases in a project calculated by Peikko Designer® can be saved to one project file
- Load cases can be copied from structural analysis and design software and added to Peikko Designer®
- Automatic structural calculations
- Various calculation results can be easily printed in several languages

In order to download Peikko's Tools for Designers, please visit our website
www.peikko.ae/design-tools/



IN-HOUSE MANUFACTURING

We at Peikko believe in manufacturing our products by ourselves - in-house manufacturing ensures quality and flexible, fast deliveries. The products are stored close to the customers in 15 warehouses located all over the world.

At Peikko Gulf LLC our manufacturing capabilities are streamlined for efficiency. With our facility in Ras Al Khaimah we are able to ensure high quality standard as well as flexible and fast deliveries. Our factory has 3,900 m² of combined production and warehousing area.

Our handling equipment includes cranes, forklifts and a range of semi-automatic and automatic machines such as welding robot unit cell, threading of reinforcement bar, forging machine and resistance automatic welding. Our Thermal cutting and equipment incorporates the most modern technology and enables us to perform an extensive range of cutting and bending for our products. At Peikko Gulf LLC welding is carried out to the highest quality standards. All welders are fully trained and their performance is constantly monitored, both on production site as well as by third party inspection agencies. In house knowledge includes sawing and drilling capabilities as well as blasting, cleaning and corrosion protection.



PRODUCTS AND SOLUTIONS

BOLTED COLUMN CONNECTIONS

With bolted column connections, you can easily in-stall columns to foundations and beams or make column-to-column connections.

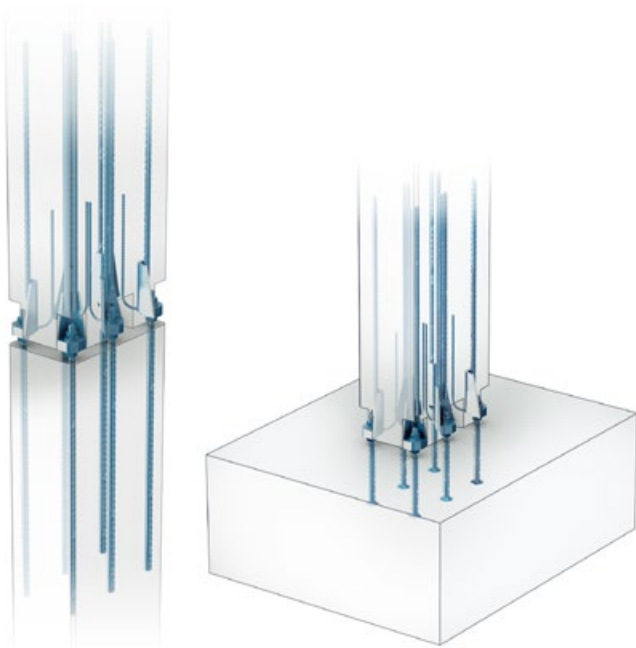
The connection is made with column shoes and anchor bolts. The column shoes are cast into precast concrete columns, while the anchor bolts are cast into the foundations or into another column to form a column splice.

The beauty of a bolted, mechanical connection is that it can be done with a small crew on site and no temporary bracing is needed. As soon as the nuts are tightened, the connection is moment resistant and the crane can move on to the next column. Once grouted, a bolt connection is as stiff as a cast in-situ connection.

Bolted connections locate columns accurately, speed up the erection process, minimize crane time, and enhance safety by maximizing accessibility on site.

Many commonly used competing systems for connecting columns are challenging and time-consuming to design in comparison to Peikko's industrialized column connections.

Most competing systems require a large crew and temporary bracing to let the grout cure. This leads to unnecessary time loss and unprofitable use of manpower and can affect safety on site. Peikko's bolted column connections maximize safety and efficiency.



DELTABEAM® SLIM FLOOR STRUCTURE

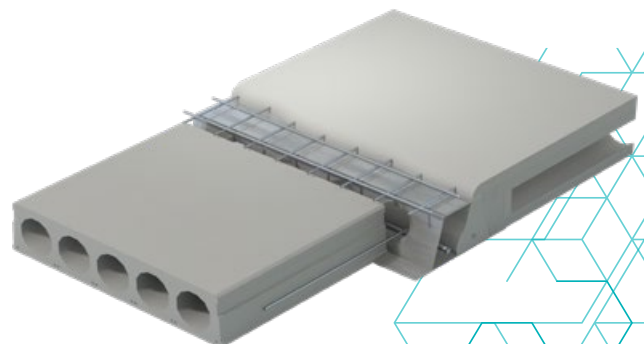
Peikko's DELTABEAM® Slim Floor Structure is a flexible solution always tailored to the customer's needs. It enables slender and light structural solutions that provide savings in terms of volume and costs.

DELTABEAM® can be connected to concrete, steel, or composite columns by using Peikko's solutions, such as Hidden Corbels, Anchor Bolts, or Welding Plates.

Choosing a slim floor structure for your new project means flexible layouts and more floors for a given height of the building – you can gain one extra floor for your building. As there will be less cubic meters per square meters, heating and cooling costs will be lower and the building more sustainable – unless you decide to use the space saved by the slim-floor structure to get extra room height for the convenience of the users.

DELTABEAM® Slim Floor Structure and its long spans allow you to create open spaces with grids of up to 12 x 16 meters. It requires less building materials and allows for flexible layouts over the entire life cycle of the building. When building downward, the excavation depth is also minimized. Thanks to the modularity of DELTABEAM®, construction time is reduced and exposure to weather is minimized. This translates into more flexibility and, ultimately, a more profitable building.

Unique in design, each beam fits perfectly to the structure and the pre-designed, standardized connections. DELTABEAM® only requires little or no propping. A small crew can erect a multi-storey building faster than with any other system on the market. Integrated fireproofing offers additional time and cost savings. The reinforcement inside the beam ensures lifelong fireproofing. Proven by multiple full-scale fire tests, DELTABEAM® Slim-Floor Structure is fireproofed even to R180 standard. With custom shaped and in-built formwork, you will have more architectural freedom while retaining the efficiency of the DELTABEAM® Slim-Floor Structure.



BEAM CONNECTIONS

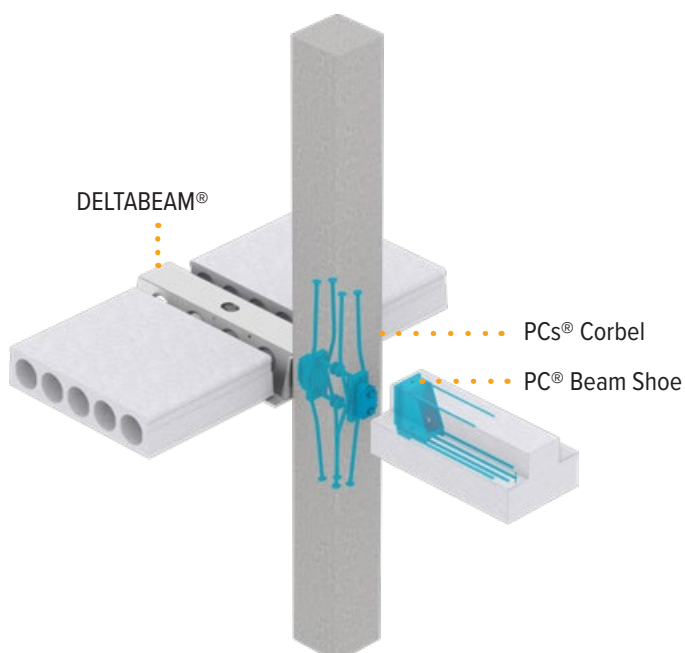
PCs® Corbel is a modular corbel where the cast-in part enables straight mold walls and the bolted bracket offers superior adjustability and high resistances. The PCs® Corbel system enables to achieve maximum floor height and create visually appealing beam-column connections in residential buildings.

PCs® Corbel is used as vertical support for steel beams, composite steel-concrete beams such as Peikko's DELTABEAM®, reinforced concrete beams and walls. It consists of a corbel plate bolted to a machined steel column plate integrated into the column. The column plate is cast into the column together with the main reinforcement and the corbel plate is attached to the column only after the formwork is removed. The system enables connecting as many beams to the columns as the cross-section allows.

PCs® Corbel is dimensioned so that the positioning of the corbel part relative to the column plate can be adjusted. After the corbel plate is bolted onto the column plate, PCs® Corbel is ready for use without any wedging or welding.

PC® Beam Shoes are used for easy installation of both reinforced and pre-stressed precast concrete beams to columns. PC® Beam Shoes are used as the counterpart for PCs® Corbels.

PC® Beam Shoes are cast to the beam where all parts of the beam shoe are hidden. It consists of steel plates that form a pocket for corbel and reinforcing bars to anchor forces into the beam. PC® Beam Shoes are dimensioned to be used with PCs® Corbel so that the final position of the beam installed on the corbel can be freely adjusted. After the corbel plate of PCs® Corbel is bolted onto the column, a beam with PC® Beam Shoe can be installed on the corbel without any wedging or welding.



BECO® Beam Shoes are connecting items used to create effective, moment-resisting connections between precast concrete columns and precast concrete beams. The Beam Shoes are casted into precast concrete beams, while Anchoring Couplers are casted into columns. On the construction site the beams are erected on corbels, adjusted to the correct positions and fixed to the Anchoring Couplers with the help of threaded bars. The joint between beam and column should be grouted before loading the beam. After grout is hardened, the joint works as reinforced concrete structure.



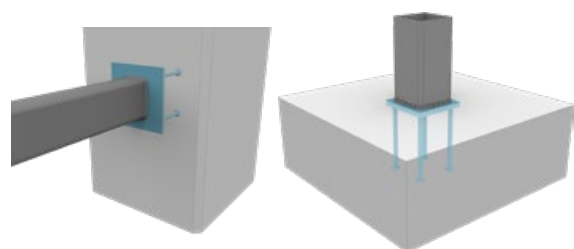
WELDED CONNECTIONS

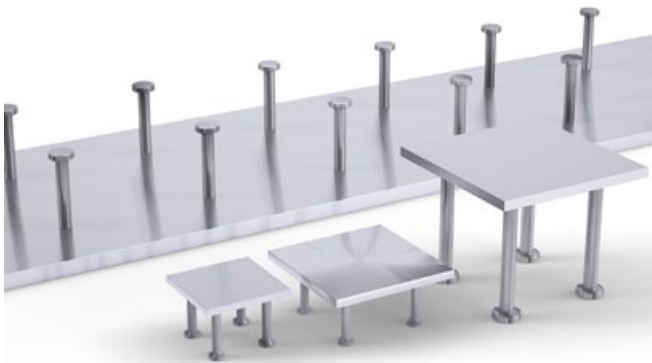
WELDA® Fastening Plate family include anchor plates for transferring heavy loads from steel structures to concrete, e.g. in industrial constructions. This is done by welding a connection to the fastening plate. WELDA® Fastening Plates are designed to be used load bearing structures of concrete frame but the stud headed rebar anchors of WELDA® enable structural connections also to thinner concrete members.

Dimensions and shapes of WELDA® Fastening Plates can be modified according to project specific needs and they are available in various material combinations in plates and studs. By request the plate can also be machined, e.g. drilling of nail holes.

WELDA® Fastening Plates are specially designed to be used in thin and shallow structures such as wall panels or slabs but they can also be placed in other structures such as beams and columns. Smooth stud headed anchors welded onto the plate enable easy installation to reinforcement.

To fulfill customer specific needs dimensions and shapes of WELDA® Fastening Plates can be modified. By request the plate can also be machined, e.g. drilling of nail holes, or other components can be welded to the plate. WELDA® Fastening Plates are also available in various material combinations in plates and studs.





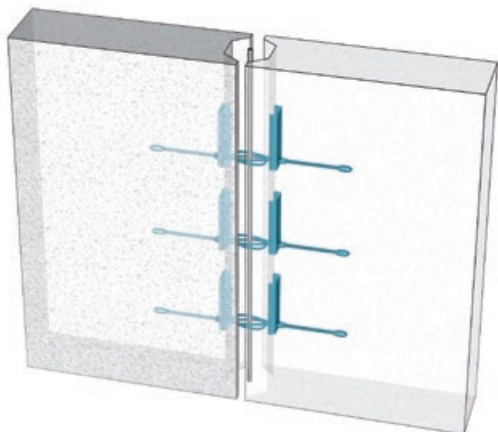
Long WELDA® and P3KL Fastening Plates are solutions for long welded connections. Long Fastening Plates are especially suitable for heavy industrial constructions and machine foundations.

Long WELDA® and P3KL Fastening Plates are designed to be used when long connections or several connections are needed on one plate. The length of the plates can be flexibly designed up to 6 m.

WALL CONNECTIONS

PVL® Connecting Loops are single-wire loops for connecting precast wall panels to each other or to a column. PVL® Connecting Loops make wall installation easy: just remove the tape and bend the loop to the operating position.

Wire loop boxes are installed to the formwork according to the spacing needed to bear the shear loads, before the panel is cast. After removing the formwork, the protective tape will be removed and the loop is opened with a hammer or a pin. Wall panels are installed and supported according to plans. A vertical rebar is installed into a joint through the loops, and the horizontal position of the loops is checked. After completion of the formwork, concrete grout is poured or pumped into the joint.

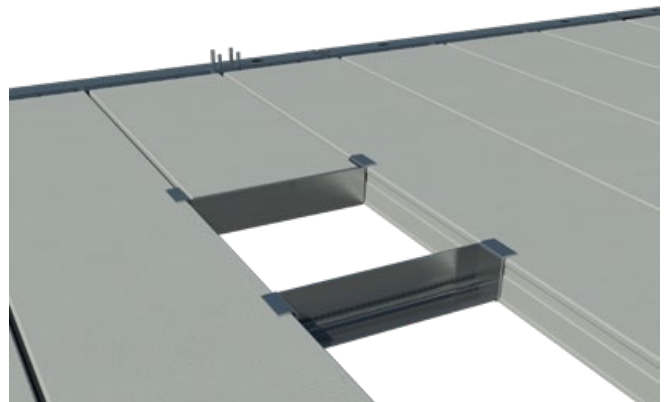


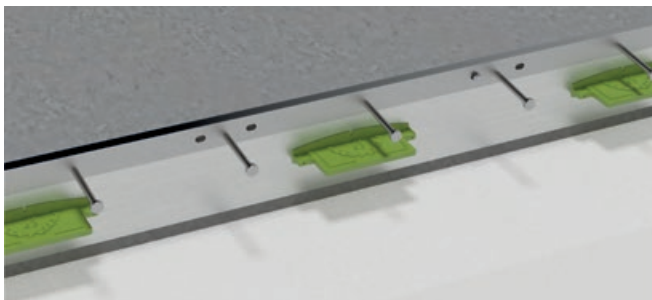
SLAB OPENINGS

PETRA® Slab Hanger is used to support hollow-core slabs and make openings and configurations into hollow-core slab floors. PETRA® is a unique technical solution that has all the benefits of a standardized product, while being used for applications that usually require careful static analyses and tailor-made structural solutions.

PETRA® consists of an L-shaped steel front plate welded together with side plates. PETRA® is usually hanged on two parallel slabs and one or more slabs are supported by the front plate. PETRA® is designed to support slabs during assembly, in normal use and also in fire situations without the need for temporary supports or propping.

PETRA® is available in several standard models that are pre-dimensioned so that their shape and resistances fit with the properties of most of the hollow-core slabs available on the European market. PETRA® and PETRA® Strong slab hangers are designed to support hollow-core slabs of up to 500 mm for making openings. Spans of up to 10 m are easily supported with standard PETRA®s. There are also special models available for hollow-core slabs with bathroom recesses and for cases where adjacent slabs are of different height.





CONCRETE FLOOR PRODUCTS

TERAJOINT® is a prefabricated leave-in-place joint system designed to build formed free-movement joints, consisting of heavy-duty arris armoring, permanent formwork and a load transfer system. It is suitable for all large-area construction methods for ground-bearing and pile-supported concrete floors. TERAJOINT® is the industry standard in the range of prefabricated heavy-duty movement joint systems for high flatness category industrial floors. TERAJOINT® transfers vertical loads between adjacent slabs and minimizes the vertical displacement of the slabs. The load transfer system is accomplished by utilizing high-strength steel discrete plate dowels, moving within rigid plastic release sleeves. The cold drawn steel rails provide extremely durable protection to the slab arrises, making it ideal for floors in a heavy-duty traffic environment.

The system ensures reliable load transfer in formed free-movement joints with openings up to 20 mm wide, and it is suitable for slab depths from 100 mm to 300 mm. TERAJOINT® can be supplied with different types of plate dowel systems. TERAJOINT® is available in plain steel, hot-dip galvanized finish or stainless steel, which means that the system offers a solution for all operational environments.



TERADOWEL Load Transfer System is designed for contraction of free movement joints in concrete floors for cases when slab edge protection is not required.

TERADOWEL allows all directional movement in the horizontal slab plane and minimizes vertical deflection of the slab edges. It eliminates completely the risk of slab interlock, as often seen with conventional bar dowel load transfer system applications. TERADOWEL is a highly economical system with load transfer capabilities.

TERADOWEL is recommended to be used for joint openings up to 20 mm wide, and is suitable for construction of all types of ground level floor slabs such as jointed or jointless, ground bearing and pile supported concrete floors.



A versatile, prefabricated leave-in-place UNIRAIL® Screed Rail system enables easy installation of super flat screeds. The system ensures the straightness and flatness tolerances of screeds with depths from 40 mm to 120 mm and enables construction of super flat screeds. It is an easy-to-use, fast track installation system. With the addition of a plastic top extender, a stable base can be provided for running any type of screeding mechanism.

UNIRAIL® is manufactured from galvanized high-strength steel, suitable for internal and external use. Tie bars, service cables or heating pipes can be fitted through the apertures in the rails. The system provides a full-strength perpendicular face to the edge of the slab in full depth without voids or cavities



PUNCHING REINFORCEMENT

PSB® and ARMATA Punching Reinforcements are ETA- and ACI-approved systems providing the highest resistance on the market. Punching and Shear Rails offer simple and reliable solutions against punching shear failure and shear failure of slabs, foundations, walls and beams by increasing their resistance.

Peikko's Punching Reinforcement is applicable to various kinds of structural systems and installation situations. Rails consist of double-headed studs, welded to a non-structural flat bar. The system is available as 2- or 3- stud elements, which can be used to construct the required reinforcement, or as complete elements with at least 10 studs. Elements are manufactured individually according to the static requirements. Being fully integrated in the concrete elements, it is an ideal reinforcement system for monolithic slim structures or flat concrete structures in general, which can be used as punching reinforcement or shear reinforcement.

LIFTING AND TRANSPORTATION

The KK Lifting System is an ideal system to lift and transport precast concrete beams, slabs, walls, and pipes. The KK Lifting System with spherical-head KK Lifting Inserts is designed for rapid coupling and re-lease with specially designed KK Lifting Keys. It is safe on-site with recessed insert installation and gives de-sign freedom in all available load directions.

The KK Lifting System is easy to use thanks to a wide selection of inserts with load capacities up to 32 tons.

- Rapid coupling and release
- All lifting directions possible
- Available in sizes from 1.3 to 32 tons
- Easy installation with recess formers
- Individual serial numbering on KK Lifting Keys

The KK Lifting System enables lifting angles up to 90 degrees. The RR Lifting System is a rapid coupling and release lifting system with flat steel inserts. Used with special Lifting Keys, RR Inserts offer a wide range of application, from slabs to columns, walls, and beams with no limit on lifting load direction. A wide selection of lifting inserts suits different kinds of lifting and transportation needs.

- Rapid coupling and release
- All lifting directions possible
- Available in load classes from 2.5 to 26 tons
- Easy installation with recess formers, no protruding of inserts
- Two optional Lifting Keys with individual serial numbering

The RR Lifting System enables angles up to 90 degrees.



The JENKA Lifting System consists of a threaded JENKA Lifting Insert cast into a concrete element and a JENKA Lifting Key, together enabling a crane hook or lifting accessories such as lifting slings or spreader beams to be connected to the precast concrete element for lifting and handling.

The anchoring of the JENKA Lifting System is based on effective rebar and threaded sockets assembled on plane or recessed leaving the element surface free.

- The most economical lifting system
- Wide range of applications
- Safe working load (SWL) capacities up to 125kN
- Small recess – cover plugs available in plastic and stainless steel
- Color coding and individual serial numbering for JENKA Lifting Keys

Improved working safety – no protruding above the concrete surface

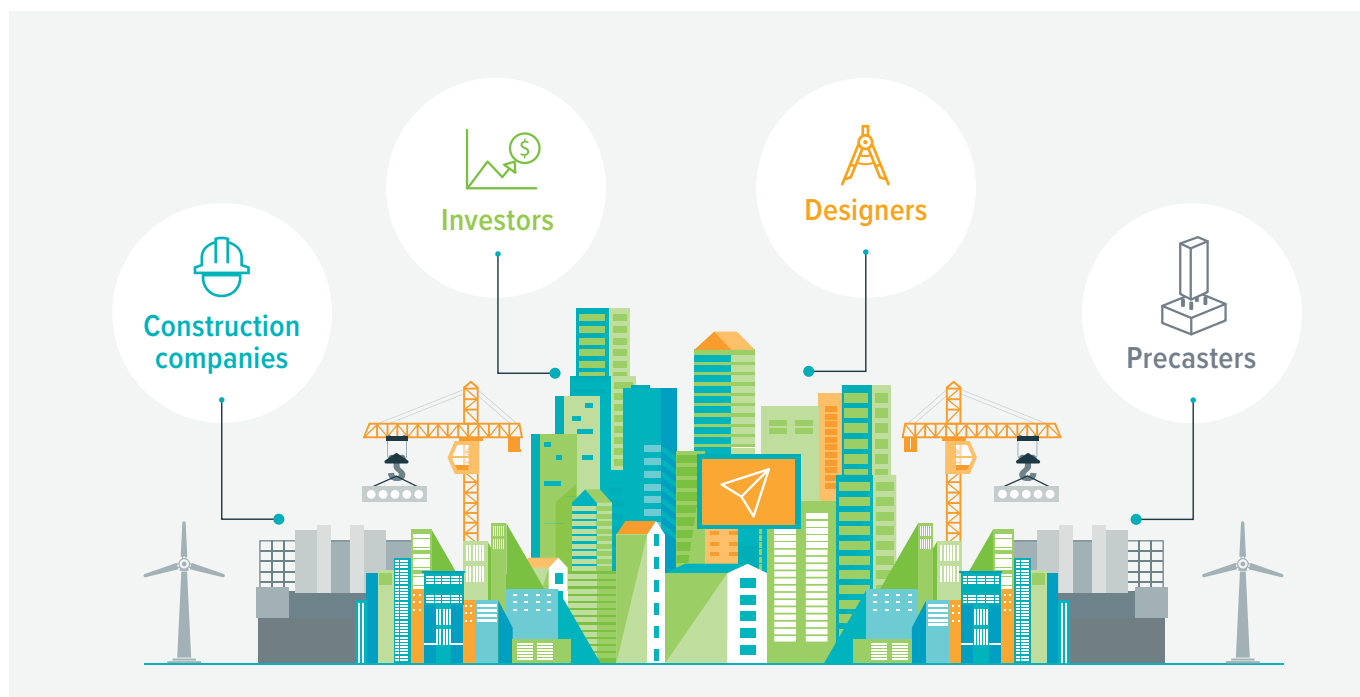
All Peikko's Lifting Systems are designed and manufactured in accordance with EU Machinery Directive 2006/42/EC and VDI/BV-BS 6205.



CLIENTELE

ae7
AECOM
Amana Steel Building Contracting LLC Consolidated Contractors
International Company Dubai Precast LLC
DUBOX Precast Products LLC
Emirates Precast Construction
Fars Al Masrooei Contr. LLC
GSIC-JV
Gulf Consult
Hard Precast Building Systems LLC
Laing O'Rourke
Mammut Technocrete
Modern 4 Concrete
RAK Precast
Redco International
Smeet Precast
United Precast Concrete
Xtramix
Abu Dhabi Precast
Hilalco - Hilal Bil Badi & Partners
Secure Engineering

MAIN CUSTOMER GROUPS



REFERENCES

ORPIC PIPE RACK, SOHAR – OMAN

Project facts

Delivery year: 2017

Peikko's solutions provided: Anchor Bolts, Column Shoes, Anchoring couplers

Developer: Oman Oil Refineries & Petroleum Industrial Complex (Orpic)

Construction Company: CBI & CTCI / OHI Group

Precaster: RAK Precast



The Orpic pipe rack is for a gas export pipeline in the Sultanate of Oman. The total length of the pipe rack is 300 kilometres, and it will enable further infrastructural improvements in Oman and remarkably increase the production of fuel, naphtha and propylene. Peikko's deliveries comprised of more than 25,000 pcs of HPKM® and PEC® Column Shoes, COPRA® Anchoring Couplers and more than 500 tons of customized embedded connection items.

AL HAYER EMIRATI HOUSING COMPLEX, AL AIN – UAE

Project facts

Delivery year: 2017

Developer: ADHA

Construction Company: Nael General Contracting L.L.C.

Structural designer: Altorath International Engineering Consultant LLC

Peikko's solutions provided: PD Diagonal Ties



Peikko delivered PD Diagonal Ties for a construction project of Al Hayer for 300 villas.

The project involves the construction of 300 villas and development of 30 plots. The residential units will meet the sustainability requirements as stipulated by UPC.

The project also comprises of a retail center, a community center, a nursery and a clinic; 360 metres for commercial outlets and two mosques of 2700 and 900 m² respectively.

MIRDIF 35, DUBAI – UAE

Project facts

Precaster: Dubai Precast

Delivery year: 2017

Developer / Construction company: Khansaheb

Peikko's solutions provided: Hollow-core Slab Hangers



Mirdif 35 is a lifestyle centre; an innovative concept that brings together several outlet stores as well as lifestyle and beauty services. Mirdif 35 has been built with Peikko's PETRA® Slab Hangers; a unique technical solution to support hollow-core slabs and make openings and configurations into hollow-core slab floors.

Mirdif 35 is a LEED GOLD certified building using, among others, recycled building materials and saving up to 25% of energy with the help of efficient heating and cooling systems, solar system and lighting.

MANAR MALL EXTENSION, RAS AL KHAIMAH – UAE

Project facts

Project Size: 30 000m²

Delivery year: 2016

Developer: Al Hamra Real Estate Development

Construction Company: Sun Engineering & Contracting

Peikko's solutions provided: Anchor Bolts, Column Shoes

Precaster: RAK Precast/Towerstech



The Manar Mall is the first and largest Shopping Mall in RAK. Manar Mall is undergoing an expansion of approximately 30,000 square meters which will almost double its leasable area. Peikko's Column Connections were used in designing and building phase of this project. Significant quantities of Peikko's HPKM Column Shoes and HPM Anchor Bolts were delivered to site by Peikko Gulf.

CITY WALK, DUBAI – UAE

Project facts

Architect: LW Design Group/HKR Architects Precaster: Dubai Precast

Developer: Meraas

Construction Company: KSV Contracting Group/AI Shafar General Contractors

Project Size: 10 000 000m²

Delivery year: 2015

Peikko's solutions provided: Hollow-core Slab Hangers



City Walk comprises living, shopping, entertainment, hospitality and wellness options in one integrated space. City Walk was conceptualized to evolve into a city within a city. The residential offering of City Walk consists of 34 five- and six-storey low-rise pavilion-style buildings. Furthermore, City Walk comprises innovative leisure and entertainment choices, as well as wellness and healthcare components. City Walk also houses a hotel and an underground parking space for 1800 cars.

MODEL VILLAS, ABU DHABI – UAE

Project facts

Delivery year: 2013

Project size: 1000 (500 + 500) m²

Precaster: SiteCast

Peikko's solutions provided: Lifting Systems, Ties and Pins



These two single story villas feature traditional UAE architecture, however they were constructed using load bearing tilt-up concrete panels. The roof slab was erected with traditional hollow core slabs with a sloped topping. It took seven weeks to construct the first villa, from the foundation to the completion of the interiors, including the external works. The second villa was constructed even faster: in six weeks. Using the conventional method of construction, homes of this size, type and style typically take a year to construct. This project won the 2013 TCA Tilt-Up Achievement Award.

MOTION GATE THEME PARK, FLINT'S DOME, DUBAI – UAE

Project facts

Delivery year: 2015

Precaster: Dubai Precast Developer: Dubai Parks&Resorts

Peikko's solutions provided: Rebar Couplers, Wall Shoes, Lifting Systems

Construction Company: Laing O'Rourke

Structural Designer: Robert Bird Group / Aurecon Architect: Gensler



Motiongate is one of the most recent theme parks in Dubai. It is an entertainment centre for the whole family combining the worlds of three most successful motion picture studios in Hollywood; DreamWorks Animation, Columbia Pictures and Lionsgate. The area of 25 000 000 m² also includes a water park.

Peikko's lifting systems, bolt connections and rebar couplers were used in building the impressive precast dome for Flint's Imagination Lab Attraction.

AL BAYT FOOTBALL STADIUM, AL KHOR – QATAR

Project facts

Delivery year: 2015

Developer: Aspire Zone

Construction Company: GSIC Joint Venture

Structural Designer: SBP

Peikko's solutions provided: Anchor Bolts, Column Shoes, Rebar Couplers, Wall Shoes, Lifting Systems



Al Bayt stadium is one of the five new football stadiums being constructed in Qatar - the future host of FIFA 2022 Football World Cup. Stadium's current capacity stands at 60,000 to allow hosting one semi-final game in 2022. The stadium mimics the traditional bedouin tent and is surrounded by landscaped plazas and parking areas. Peikko's bolt connections, lifting items and rebar coupling systems were chosen for this prestigious project.

MINISTRY OF HIGHER EDUCATION, RIYADH – KSA

Project facts

Structural Designer: Al Salem Johnson Controls

Precaster: AlRashid Abetong Co. Ltd.

Developer: Ministry of Higher Education

Delivery year: 2010

Peikko's solutions provided: Anchor Bolts, Column Shoes, Lifting Systems, Fastening Plates



The new head office of the Ministry of Higher Education (MOHE) in Riyadh has become the first governmental property that fully integrates smart technology in Saudi Arabia. Peikko has facilitated the construction of this remarkable building with numerous column shoes, anchor bolts, and lifting and fastening items.

MOHE was recently certified by Smart Buildings Institute, a non-profit organization aimed to encourage smart building technology.

AL RASHID RESIDENCE TOWERS, AL KHOBAR – KSA

Project facts

Delivery year: 2014 – 2015

Project floors: 13

Construction Company: Al-Rashid Trading & Contracting Company RTCC

Precaster: Al Rashid Abetong LLC

Peikko's solutions provided: Anchor Bolts, Column Shoes



Al Rashid hotel and residential complex is located right next to Al Rashed Mall in Al Khobar. The complex is connected to the mall by a bridge. Complex has a hotel and five residential build-ings connected to each other from the upper floors. The whole frame of the building is designed with Peikko column connections with a remarkable amount of HPKM® column shoes and bolts. Most of the other connections are designed with welding plate connections also manufactured by Peikko.

LULU HYPERMARKET, DAMMAM – KSA

Project facts

Precaster: Prainsa Saudi Arabia

Delivery year: 2012

Peikko's solutions provided: Anchor Bolts, Column Shoes, Lifting Systems



LuLu Hypermarket is well known as a trend setter of the retail industry in the Gulf region. Today, LuLu has 129 stores and is popular with the shoppers across the region. The new hypermarket provides a one-stop shopping destination for the growing city dwellers. The hypermarket also houses Sparkys family entertainment, a food court and several small stores. LuLu Hypermarket in Dammam has been built with Peikko's column shoes and anchor bolts, and by using Peikko's lifting systems.

PRINCESS NOURA BINT ABDUL RAHMAN UNIVERSITY, RIYADH – KSA

Project facts

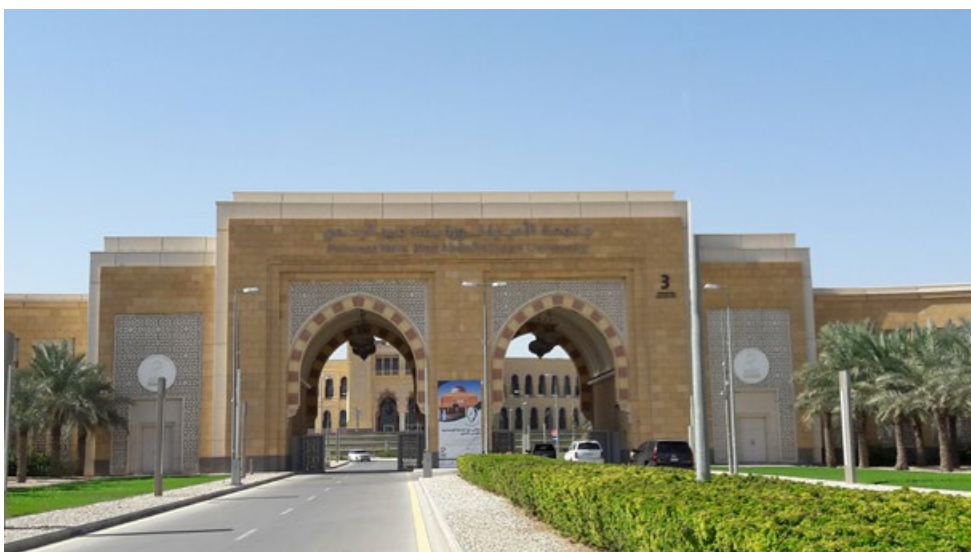
Delivery year: 2010

Developer: Ministry of Higher Education, Ministry of Finance

Structural Designer: Dar Al Handasah Shair And Partners

Peikko's solutions provided: Lifting Systems, Column Shoes

Construction Company: Saudi Binladin Group / Arabtec Construction / El Seif Engineering Contracting Company / Saudi Oger



Over 2010 Peikko provided steel components to one of the biggest construction projects in the Middle East. The construction of Princess Noura Bint Abdulrahman University in Riyadh, the capital of Saudi Arabia, started during the second quarter of 2009. The Kingdom's first women-only university was completed in 2012. It has 13 academic faculties connected with a monorail and a capacity for 26 000 students.

WATERFRONT CITY, SHARJAH, UAE

Delivery year: 2017-2018

Developer: Sharjah Oasis Real Estate Development

Structural Designer: Naaga

Precaster: Abu Dhabi Precast

Peikko's solutions provided: DELTABEAM® Composite Beams, Anchor Bolts

Construction Company: Tech-Construction



Sharjah Waterfront city has been listed among largest mixed-use projects in GCC. Peikko is participating on the first phase housing project of with our Anchor Bolts and DELTABEAM® Composite Beams. Peikko's solutions were chosen thanks to our slim floor structure that enables the ceiling without any drop-down panels. Sharjah Waterfront City will be built over 10 islands along 30 kilometers of waterfront, covering an area of 60 million square feet. The area will cover a hotel, several housing units and 24 mixed use high-rise buildings, central business district, shopping centers and other tourism facilities. DELTABEAM® Composite Beams have been used in 149 3-bedroom and 79 4-bedroom villas.



INDUSTRIAL LICENSE



GOVERNMENT OF RAS AL KHAIMAH حكومة رأس الخيمة



RAS AL KHAIMAH ECONOMIC ZONE
GOVERNMENT OF RAS AL KHAIMAH
مناطق رأس الخيمة الاقتصادية
حكومة رأس الخيمة
REGISTRATION & LICENSING DEPARTMENT
إدارة التسجيل والتراخيص

REGISTRAR OF COMPANIES مسجل الشركات

This document is electronically issued by Ras Al Khaimah Economic Zone Authority. Document Reference no.: 439681-4YRD-RY61-19282863
For verification purpose, please go to <http://rak.force.com/Auth/> and enter the above document reference number.
صادرة عن هيئة مناطق رأس الخيمة الاقتصادية، وخاضعة لجميع القوانين والأنظمة والقواعد الخاصة بالهيئة.
Issued by Ras Al Khaimah Economic Zone Authority and subject to all Laws, Regulations & Rules that belong to the authority.

CERTIFICATES

COMMERCIAL LICENSE

رخصة COMMERCIAL LICENCE

حكومة رأس الخيمة GOVERNMENT OF RAS AL KHAIMAH



LICENCE NO	RAKIA47WIZ08125864	رقم الرخصة
TYPE	Non-Freezone	شركة محلية التصنيف
LEGAL TYPE	Limited Liability Company - LLC	الشكل القانوني شركة ذات مسؤولية محدودة
LICENSEE	PEIKKO GULF LLC	صاحب الرخصة شركة بيكو الخليج ذ.م.م
OPERATING NAME	PEIKKO GULF LLC	الإسم التجاري شركة بيكو الخليج ذ.م.م
ADDRESS	PL259 Al Hamra Industrial Zone-NFZ RAK, United Arab Emirates	العنوان PL259 منطقة الحمرا الصناعية رأس الخيمة، الإمارات العربية المتحدة
ACTIVITY	RETAIL SALE OF ENFORCEMENT STEEL, RETAIL SALE OF IRON PRODUCTS AND RETAIL SALE OF METAL PRODUCTS TRADING FOR BUILDINGS, WINDOWS And DOORS	النشاط بيع حديد التسليح- بالتجزئة , بيع منتجات الحديد بالتجزئة و بيع المصنوعات المعدنية للابنية والنوافذ والابواب-بالتجزئة
MANAGER	RADOVAN ENDEL	المدير ردفان ايندل
ISSUE DATE	06-08-2012	تاريخ الإصدار
EXPIRY DATE	05-08-2021	تاريخ الإنتهاء
REMARKS	Changed the manager The Licensee must obtain the required approvals from the UAE Competent Government Authorities, as applicable	ملاحظات تغيير المدير على المرخص له الحصول على كافة الموافقات اللازمة من الجهات الحكومية المختصة في دولة الإمارات العربية المتحدة حسب الإقتضاء



REGISTRAR OF COMPANIES مسجل الشركات

This document is electronically issued by Ras Al Khaimah Economic Zone Authority. Document Reference no.: 439681-4YRD-RY8i-19282863
For verification purpose, please go to <http://rak.force.com/Author> and enter the above document reference number.
صادرة عن هيئة مناطق رأس الخيمة الاقتصادية، وخاضعة لجميع القوانين والأنظمة والقواعد الخاصة بالهيئة.
Issued by Ras Al Khaimah Economic Zone Authority and subject to all Laws, Regulations & Rules that belong to the authority.



الرقم: 108528-6-2014

شهادة استيفاء شروط السلامة الوقائية

صدرت هذه الشهادة استناداً إلى قرار مجلس الوزراء رقم (24) لسنة 2012 م في شأن تنظيم خدمات الدفاع المدني بالولاية

رقم الأرض :	RAKIA47EIZ08125864 (تجاري)	رقم الرخصة :	شركة بيكو الخليج لدم م	الاسم التجاري للمنشأة :
الإمارات العربية المتحدة		الجنسية:	شركة بيكو الخليج لدم م	العالم:
16/08/2020	11/08/2021	12/08/2020	من	المدة: 12/08/2020 إلى 11/08/2021
حريت بتاريخ:		مصلحة الشهادة:	مصلحة	الجهة: رأس الخيمة
				الجهة: رأس الخيمة

ملاحظات:

- تم تسجيل الرسم بإجمالي رقم (200043254966)

- يجب الالتزام بأحكام عقود والصيانة التورية لأجهزة ومعدات السلامة والوقاية من الحريق من إحدى الشركات المعتمدة.

- أي تعديلات في أنظمة وأجهزة السلامة والوقاية من الحريق أو النشاط يتطلب موافقة مسبقة من الدفاع المدني.

- يجب ربط المبنى بنظام حريق الحماية الميكانيكي - رقم التواصل (800333363).

- في حال الإحلال بأي من التشريعات السلامة الوقائية سيتم مخالفة المنشأة (توزيع المخالفات خلف الشهادة).

- توضع الشهادة في مكان بارز وواضح للعيان.

- مراجعة الدفاع المدني سنوياً للتأكد من سلامة المبنى.



- يرجى الانتباه من إجراءات الترتيب خلال 60 يوم كحد أقصى وإلا سوف تتعرض المنشأة للمساءلة القانونية ولذا نلزم مجلس الوزراء رقم 24 لسنة 2012 م





للطوارئ
997
999
Emergency
هاتف: 07 - 2288699 فاكس: 07 - 2272129 الموقع الإلكتروني: www.rak997.com
نظام الشكاوى والمقرحات: www.fms.ae

نؤيد أن تكون دولة الإمارات العربية المتحدة من أفضل دول العالم في تحقيق الأمن والسلامة

تعتبر هذه الشهادة وثيقة رسمية لا تحتاج إلى توقيع للتأكد من صحة المعلومات يرجى زيارة الرابط التالي: Inquiry - Index / certificate - https://cdservices.moi.gov.ae/

INSURANCE CERTIFICATE / ISO 3834 QMS CERTIFICATE

	
CERTIFICATE OF INSURANCE	
Subject to the below terms and conditions OP Insurance Ltd has granted General Liability Insurance covering the insured's legal liability to make good loss or damage. The insurance policy includes General Liability and Products Liability coverages.	
Policyholder	Peikko Group Oy
Policy no	16-227-159-8
Insureds	Peikko Group and its subsidiaries are insured under this policy also including Peikko Finland Oy.
Insured Products	All products and design of products of an insured.
Geographical Scope	Worldwide
Policy Period	1 January 2019 – 31 December 2019
Terms and Conditions	AON Finland - Poljola GL 010108 and Special Conditions.
Helsinki, 7 th January, 2019 OP INSURANCE LTD 	
This certificate is issued as a matter of information only and confers no rights upon the certificate holder. This certificate does not amend extend or alter the coverage afforded by the policies above.	

	
<h1>CERTIFICATE OF CONFORMITY</h1>	
Certificate No: 151280-2014-AQ-FIN-FINAS	Initial certification date: 17 March 2005
Valid: 12 December 2019 – 12 September 2022	
This is to certify that the welding operations and associated activities which influence the integrity of welds of:	
Peikko Group Corporation Voimakatu 3, 15170 Lahti, Finland and the sites as mentioned in the appendix accompanying this certificate	
has been found to conform to the Quality requirements for fusion welding of metallic materials in the standard ISO 3834-2:2005	
This certificate is valid for the following scope: Manufacture of concrete connection parts; manufacture of composite columns, beams and steel structures. For a description of the welding activities see Appendix accompanying this Certificate.	
Place and date: Espoo, 12 December 2019	For the issuing office: DNV GL - Business Assurance Kellastamäki 5, 02150 Espoo, Finland  Kimmo Haavala Management Representative
	 Finnish Accreditation Service S018 (EN ISO/IEC 17065)
Lack of fulfillment of conditions as set out in the Certification Agreement may render this Certificate invalid. ACCREDITED UNIT: DNV GL Business Assurance Finland Oy Ab, Kellastamäki 5, 02150 Espoo, Finland. TEL: +358 10 292 4200. www.dnvgl.fi/assurance	

Certificate No.: 151280-2014-AQ-FIN-FINAS
Place and date: Espoo, 12 December 2019

Appendix to Certificate

Peikko Group Corporation

Locations included in the certification are as follows:

Site Name	Site Address
Peikko Construction Accessories (Zhangjiagang) Co., Ltd	No. 9 Fujin Rd, Zhangjiagang Economic Development Zone (North Region) Jiangsu Province Zhangjiagang China 215600
Peikko Deutschland GmbH (Waldeck)	Brinker Weg 15, 34513 Waldeck, Germany
Peikko Finland Oy (Vipusenkatu 10 A, Lahti)	Vipusenkatu 10 A, 15230 Lahti, Finland
Peikko Finland Oy (Vipusenkatu 10 C, Lahti)	Vipusenkatu 10 C, 15230 Lahti, Finland
Peikko Finland Oy (Vipusenkatu 12, Lahti)	Vipusenkatu 12, 15230 Lahti, Finland
Peikko Finland Oy (Vipusenkatu 20, Lahti)	Vipusenkatu 20, 15230 Lahti, Finland
Peikko Group Corporation	Voinakatu 3, 15170 Lahti, Finland
Peikko Gulf LLC	RAK Office & Warehouse, Shed No. W104-1 to 6, 86031, Ras Al Khaima, United Arab Emirates
Peikko LLC	Domostrotelnaya street, 16, St. Petersburg, Russian Federation, 194292
Peikko Romania S.R.L.	Sat Bolintin Deal, Comuna Bolintin Deal, Strada ITHACA, Nr. 220.087015, Judet Giurgiu, Romania
Peikko Slovakia s.r.o. (647, Kráľová nad Váhom)	Kráľová nad Váhom 647, 925 91 Kráľová nad Váhom, Slovakia (Slovak Republic)
Peikko Slovakia s.r.o. (660, Kráľová nad Váhom)	Kráľová nad Váhom 660, 925 91 Kráľová nad Váhom, Slovakia (Slovak Republic)
UAB Peikko Lietuva" (R. Kalantos str., Kaunas)"	R. Kalantos str. 49, 52303, Kaunas, Lithuania
UAB Peikko Lietuva" (Naglio str., Kaunas)"	Naglio str. 4B, 52367, Kaunas, Lithuania

Lack of fulfilment of conditions as set out in the Certification Agreement may render this Certificate invalid.
ACCREDITED UNIT: DNV GL Business Assurance Finland Oy Ab, Keuholantie 5, 02150 Espoo, Finland. TEL: +358 10 292 4200. www.dnvgl.fi/assurance

Certificate No.: 151280-2014-AQ-FIN-FINAS
Place and date: Espoo, 12 December 2019

Peikko Group Corporation

Peikko Deutschland GmbH

Peikko Finland Oy

UAB "Peikko Lietuva"

Peikko Slovakia s.r.o.

Peikko Gulf LLC

Peikko LLC

Peikko Construction Accessories (Zhangjiagang) Co., Ltd.

Peikko Romania SRL

Appendix to Certificate

SCOPE OF ACTIVITY

1 – Type of product(s):

Load transmitting fastening items, Composite beams and columns, Steel structures, Welding of reinforcing steel (load-bearing and non-load-bearing welded joints)

2 – Parent material group(s) (according ISO/TR 15608):

1.1, 1.2, 1.4, 3.2, 8.1, 8.2 and reinforcing steel

3 – Welding and allied processes:

111, 121, 135, 136, 138, 141, 21, 26 and 783

4 – Responsible Welding Coordination Personnel:

Name	Qualification/ Level (ISO 14731)
Zygmantas Kačinskas (Peikko Group Oy)	IWE
Kirimo Virtanen (Peikko Finland Oy)	IWS/IW1-S
Adrian Pastor (Peikko Slovakia s.r.o.)	IWE
Christoph Gubmann (Peikko Deutschland GmbH)	IWE
Eugenijus Duikinas (UAB "Peikko Lietuva")	IWE
Sheik Bahathur Samsudeen (Peikko Gulf LLC)	IWE
Roman Kamenko (Peikko LLC)	IWE
Hongyan (Emma) Zhang (Peikko Construction Accessories (Zhangjiagang) Co., Ltd)	IWE
Filip Cornel (Peikko Romania SRL)	IWE

Lack of fulfilment of conditions as set out in the Certification Agreement may render this Certificate invalid.
ACCREDITED UNIT: DNV GL Business Assurance Finland Oy Ab, Keuholantie 5, 02150 Espoo, Finland. TEL: +358 10 292 4200. www.dnvgl.fi/assurance

DNV·GL

MANAGEMENT SYSTEM CERTIFICATE

Certificate No:
151277-2014-AQ-FIN-FINAS

Initial certification date:
10 June 2002

Valid:
13 March 2019 - 12 September 2022

This is to certify that the management system of

Peikko Group Corporation

Voimakatu 3, 15170 Lahti, Finland
and the sites as mentioned in the appendix accompanying this certificate

has been found to conform to the Quality Management System standard:
ISO 9001:2015

This certificate is valid for the following scope:

**Product development, production and marketing of concrete connections.
Design, production and marketing of composite beams and composite
columns. Design, production and marketing of steel structures.**

Place and date:
Espoo, 13 March 2019



For the issuing office:
DNV GL - Business Assurance
Keilasatama 5, 02150 Espoo, Finland

Kimmo Haarala
Management Representative

Lack of fulfilment of conditions as set out in the Certification Agreement may render this Certificate invalid.
ACCREDITED UNIT: DNV GL BUSINESS ASSURANCE FINLAND OY AB, Keilasatama 5, 02150 Espoo, Finland. TEL: +358 10 292 4200. assurance.dnvgi.com

DNV·GL

MANAGEMENT SYSTEM CERTIFICATE

Certificate No:
151278-2014-AE-FIN-FINAS

Initial certification date:
10 June 2002

Valid:
13 March 2019 - 12 September 2022

This is to certify that the management system of

Peikko Group Corporation

Voimakatu 3, 15170 Lahti, Finland

and the sites as mentioned in the appendix accompanying this certificate

has been found to conform to the Environmental Management System standard:

ISO 14001:2015

This certificate is valid for the following scope:

**Product development, production and marketing of concrete connections.
Design, production and marketing of composite beams and composite
columns. Design, production and marketing of steel structures.**

Place and date:
Espoo, 13 March 2019



For the issuing office:
DNV GL - Business Assurance
Keilasatama 5, 02150 Espoo, Finland

Kimmo Haarala
Management Representative

Lack of fulfilment of conditions as set out in the Certification Agreement may render this Certificate invalid.
ACCREDITED UNIT: DNV GL BUSINESS ASSURANCE FINLAND OY AB, Keilasatama 5, 02150 Espoo, Finland. TEL: +358 10 292 4200. assurance.dnvgl.com

DNV·GL

MANAGEMENT SYSTEM CERTIFICATE

Certificate No:
151279-2014-AHSO-FIN-FINAS

Initial certification date:
27 December 2012

Valid:
13 March 2019 - 12 September 2022

This is to certify that the management system of

Peikko Group Corporation

Voimakatu 3, 15170 Lahti, Finland

and the sites as mentioned in the appendix accompanying this certificate

has been found to conform to the Occupational Health and Safety Management System
standard:

ISO 45001:2018

This certificate is valid for the following scope:

**Product development, production and marketing of concrete connections.
Design, production and marketing of composite beams and composite
columns. Design, production and marketing of steel structures.**

Place and date:
Espoo, 13 March 2019



For the issuing office:
DNV GL Business Assurance Finland Oy Ab


Kimmo Haarala
Management Representative

Lack of fulfilment of conditions as set out in the Certification Agreement may render this Certificate invalid.
ACCREDITED UNIT: DNV GL BUSINESS ASSURANCE FINLAND OY AB, Keilasatama 5, 02150 Espoo, Finland. TEL: +358 10 292 4200. assurance.dnvgf.com

ENVIRONMENTAL COMPLIANCE CERTIFICATE

حكومة رأس الخيمة
Government of Ras Al Khaimah

هيئة حماية البيئة والتنمية
Environment Protection & Development Authority



تصريح بيئي Environmental Permit

Ref No. : I19112418

Date of Issue : 07/12/2019

Permit No. : 15I12175

Expiry Date : 06/12/2020

Facility's Name : Peikko Gulf LLC

اسم المنشأة : بيكو الخليج ذ م م

Location : WIZ4 Al Jazirah Al Hamrah -
Ras al Khaimah - United Arab
Emirates

الموقع : WIZ4 Al Jazirah Al Hamrah
- Ras al Khaimah - United
Arab Emirates

Activity : Metal and Steel manufacturing

نشاط : تصنيع المعادن/الحديد

1. Failure to comply with the above and any of the attached conditions will subject the company to penalty and / or cancellation of this Permit. 1. إن عدم الامتثال للاشتراطات المذكورة سواء في أعلاه و/أو المذكورة في التصريح قد يعرض المنشأة المخالفة للغرامة و/أو إلغاء هذا التصريح.

2. The Permitted Facility shall notify EPDA with an official letter at the commencement of the operational / productivity / service operations. 2. يتوجب على المنشأة المصرح لها إشعار الهيئة بخطاب رسمي عند بدء العمليات التشغيلية / الإنتاجية/ الخدمة



هيئة حماية البيئة والتنمية - موقع الكتروني: www.epda.rak.ae بريد الكتروني: info@epda.rak.ae

هاتف: 072333371 | فاكس: 072333789 | الهاتف المجاني : 8003732 | ص.ب . 11377



DCL DELTABEAM® APPROVAL / DCL COLUMN SHOE APPROVAL



CERTIFICATE OF PRODUCT CONFORMITY

Dubai Central Laboratory Department (DCLD) of Dubai Municipality
hereby attests that the product(s)

STEEL COMPOSITE LOAD BEARING BEAM(DELTABEAM®)
(Details as per the attached Scope of Certification)

manufactured by:
PEIKKO GULF LLC
Al Hamra Industrial Zone, Warehouse WIZ 04-2, Ras AL Khaimah, UAE

have been assessed in accordance with DCLD Document Ref. No. DM-DCLD-RD-DP21-2001 (IC) "General Rules for DM Third Party Product Certification Scheme Through Factory Assessment" and were found in conformity with the Technical Approval Requirements

TARR 145

Accordingly, DCLD hereby authorizes the above manufacturer
to affix the DCL Product Conformity Mark to the above-mentioned product(s).



for / **ENGR. AMIN AHMED AMIN**
Director, Dubai Central Laboratory Department
Dubai Municipality



Certificate No: **TAC15080145**
Valid Until: **01 July 2021**



Current Issue Date: **02 July 2020**
Original Issue Date: **02 July 2015**



The attached Scope of Certification bearing the same Certificate No. forms an integral part of this Certificate.
This Certificate is an electronic document, subject to the Terms and Conditions of the Product Certification System and shall not be reproduced except in full.

بناءً مدينتنا سعيدة ومستدامة
Developing a happy and sustainable city

DM-DCLD-F-IC-8003 REV 04

800900
www.dcm.gov.ae





CERTIFICATE OF PRODUCT CONFORMITY

Dubai Central Laboratory Department (DCLD) of Dubai Municipality
hereby attests that the product(s)

PEIKKO HPKM column shoes
(Details as per the attached Scope of Certification)

manufactured by:
PEIKKO GULF LLC
P.O. Box 86031 - Al Hamra Industrial Zone - RAS AL KHAIMAH, UAE

have been assessed in accordance with DCLD Document Ref. No. DM-DCLD-RD-DP21-2001 (IC) "General Rules for DM Third Party Product Certification Scheme Through Factory Assessment" and were found in conformity with the Technical Approval Requirements

TARR 151

Accordingly, DCLD hereby authorizes the above manufacturer
to affix the DCL Product Conformity Mark to the above-mentioned product(s).



for / **ENGR. AMIN AHMED AMIN**
Director, Dubai Central Laboratory Department
Dubai Municipality



Certificate No: **TAC18080151 REV.01**
Valid Until: **15 May 2021**



Current Issue Date: **07 December 2020**
Original Issue Date: **16 May 2018**



The attached Scope of Certification bearing the same Certificate No. forms an integral part of this Certificate.
This Certificate is an electronic document, subject to the Terms and Conditions of the Product Certification System and shall not be reproduced except in full.

بناءً مدينتنا سعيدة ومستدامة
Developing a happy and sustainable city

DM-DCLD-F-IC-8003 REV 04

800900
www.dcm.gov.ae



VAT REGISTRATION CERTIFICATE

الهيئة الاتحادية للضرائب
FEDERAL TAX AUTHORITY



شهادة تسجيل لضريبة القيمة المضافة في الامارات العربية المتحدة
Certificate of Registration for Value Added Tax in the United Arab Emirates

The Federal Tax Authority certifies that the entity below is a registered person for Value Added Tax in the UAE
تشهد الهيئة الاتحادية للضرائب أن الجهة التالية مسجلة لضريبة القيمة المضافة في الامارات العربية المتحدة

Full Arabic legal name: شركة سكو الخليج ذ م م
Full English legal name: Peikko Gulf LLC
Registered address: Peikko Gulf LLC, Warehouse WIZ 04-2, Al Hamra Industrial Zone, Al Hamra Industrial Zone, Ras Al Khaimah, 86031, United Arab Emirates, N/A, United Arab Emirates (+971)564303433

Tax Registration Number: 100000565000003
Effective Registration Date: 01/01/2018

First VAT Return Period: 1 Jan 2018 – 28 Feb 2018 and quarterly thereafter
VAT Return due date: 28th day following the end of the VAT return period

Start and end dates of Tax periods: 1 Mar to 31 May, 1 Jun to 31 Aug, 1 Sep to 30 Nov, 1 Dec to 28/29 Feb

يرجى التأكد من صحة تفاصيل الشهادة. يجب إبلاغ الهيئة الاتحادية للضرائب في حال تغيير الاسس التي حصلت فيها على رقم التسجيل الضريبي الخاص بك.

Please check that the details on this certificate are correct. You must inform the Federal Tax Authority of any change on the basis of which you obtained your Tax Registration Number.



Issuing Date: 16/10/2017

تاريخ الإصدار

CONTACT US

Peikko Gulf LLC
Al Hamra Industrial Zone
Plot 259- 270
P.O. Box 86031
Ras Al Khaimah
United Arab Emirates
Tel. +971 7 2433 627
gulf@peikko.com



Visit our website to find out more about our references, detailed technical information on products, a complete product catalogue, technical manuals and downloadable design software and components.

www.peikko.ae

📍 EXPERT ADVICE LOCALLY AVAILABLE

Peikko Gulf LLC is a leading supplier in the GCC countries for the innovative solutions for precast element connections, cast-in-situ accessories and components, and integrated composite beams. Peikko Gulf LLC is the sole representative of Peikko Group Corporation on the GCC region.

www.peikko.ae



A faster, safer, and more efficient way to design and build

Peikko supplies slim floor structures and connection technology for precast and cast-in-situ applications. Peikko's innovative solutions make your construction process more efficient.