

Installing Diagonal Ties

Alternative installation method no. 1

The Ties are installed into fresh concrete in turns with insulation panels. This ensures that the correct required anchoring of the tie occurs in the lower concrete panel. Ties must not be inserted through the insulation. The designed anchoring depth (see *Table 1*) of the Ties must stay above the insulation. The insulation panel is installed tightly against the tie so that there is no gap around the tie. If hard insulation materials are being used, diagonals create a gap between the insulation panels (see *Figure 17*).

Alternative Installation method no. 2

Alternatively, the Diagonal Ties can also be installed with mesh. After finishing the outer layer and pouring with concrete inner layer mesh reinforcement is bind to Diagonal Ties. Then cut insulation according to the spacing of ties and pour the inner layer with concrete. Top mesh can be installed directly on Diagonal Ties (see *Figure 18*).

The standard length of Diagonal Ties is 3000 mm and the maximum thickness of insulation panels is 150 mm. Multiple Diagonal Ties may be placed in one row without splicing (see *Figure 19*).

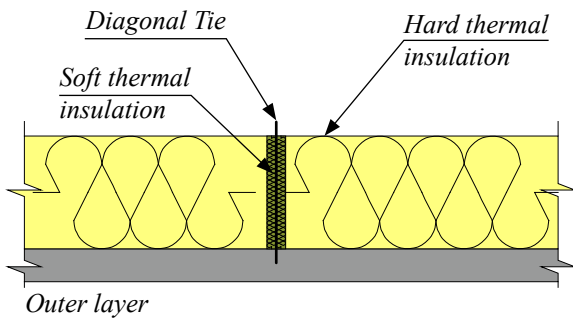


Figure 17. Soft thermal insulation between hard thermal insulation.

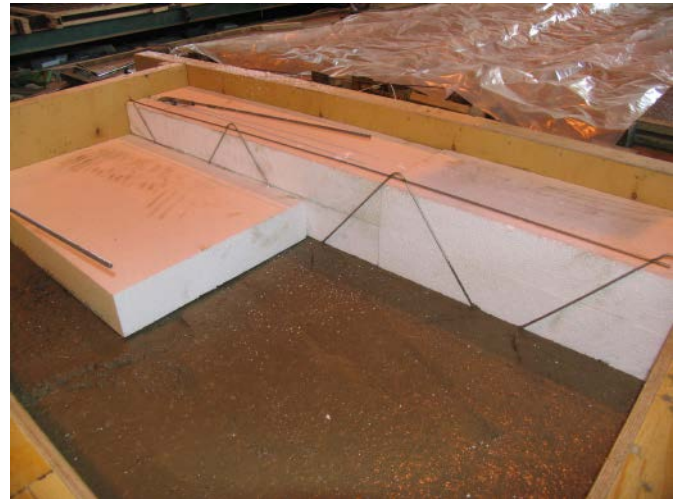


Figure 18. Installation of Diagonal Ties.



Figure 19. Diagonal ties installation with mesh.



Figure 20. PD ties after installation of insulation.