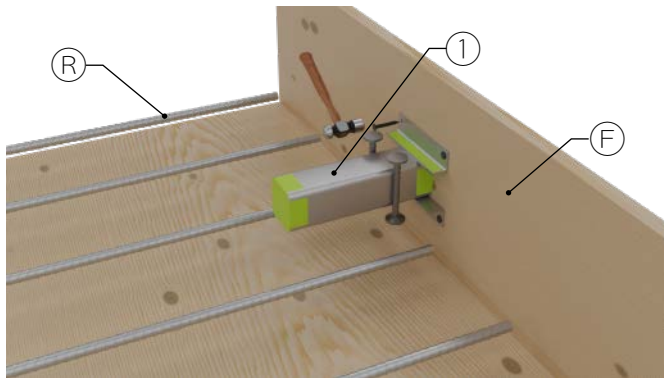


## Installing STRIFF® Shear Dowel

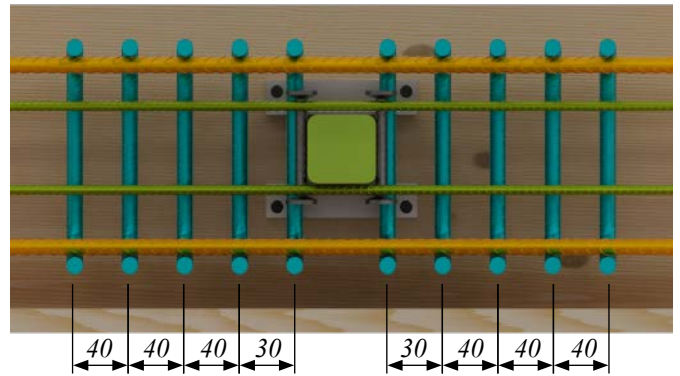
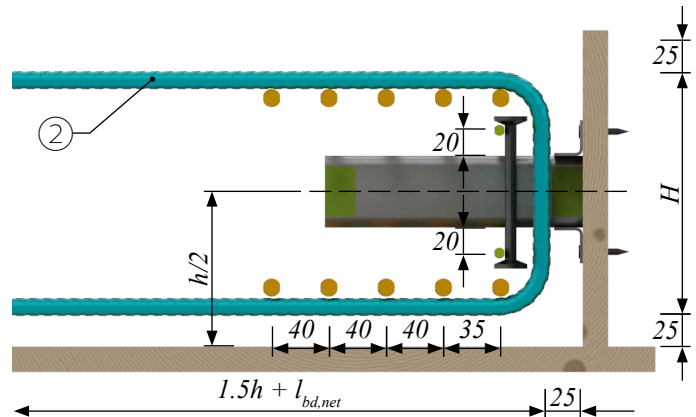
### Step 1

Fixing STRIFF® sleeve ① to the formwork ⑤ with nails or screws after the main bottom reinforcement ⑥ of the slab is installed. Make sure that the product labels are not damaged. The double-headed studs must be positioned parallel with the side edge of the cast element. **Please make sure the sleeve is installed perpendicularly and is not twisted.**



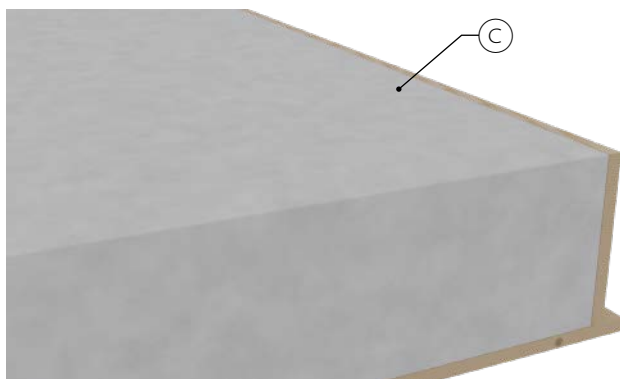
### Step 2

Installing additional reinforcement ② with concrete cover stated according to EN 1992-1-1 and specified spacing between the rebars.



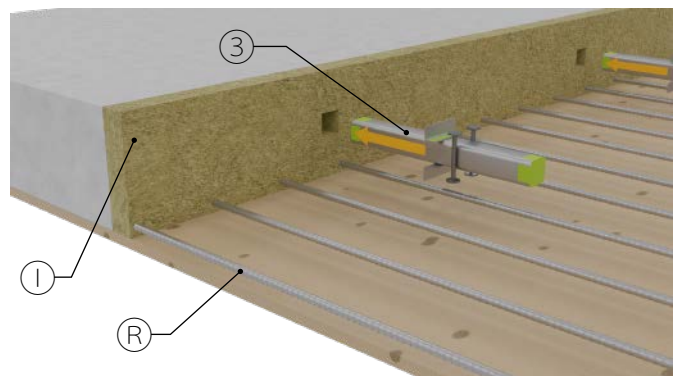
### Step 3

Concreting ③ first construction stage.

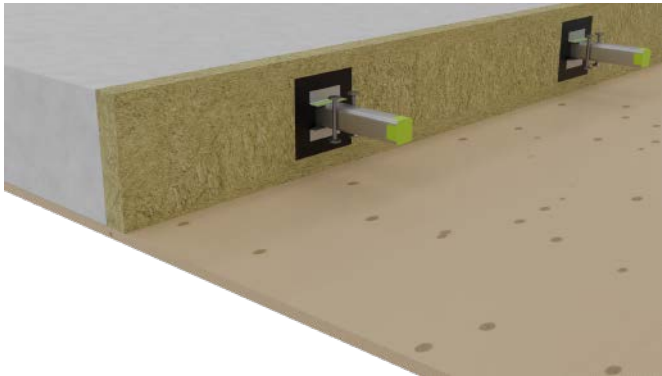
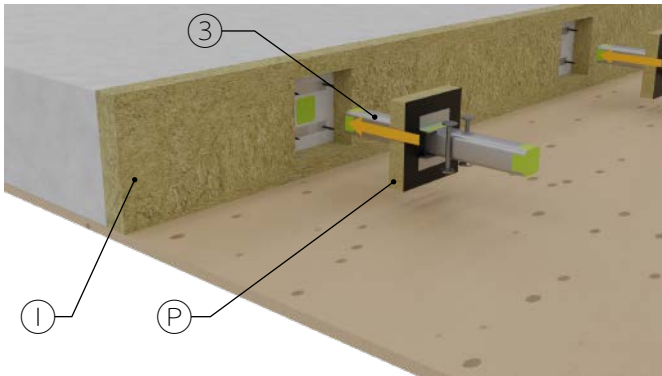


### Step 4

Installation of the joint material and the dowel – the joint material ① must be prepared with recesses for the dowels and, if necessary, for the fire protection collars. The dowels ③ are inserted through the joint material into the sleeve up to the stop after the main bottom reinforcement of the element is installed. The front sleeve labels must first be punctured in the middle. **Please make sure the dowel is installed perpendicularly and is not twisted.**



While using fire protection collar ③ placing the joint material ① with cut-out recesses for the pre-attached fire protection collars. The arrangement and type of the BSM must be selected based on the joint width according to *Table 4*.

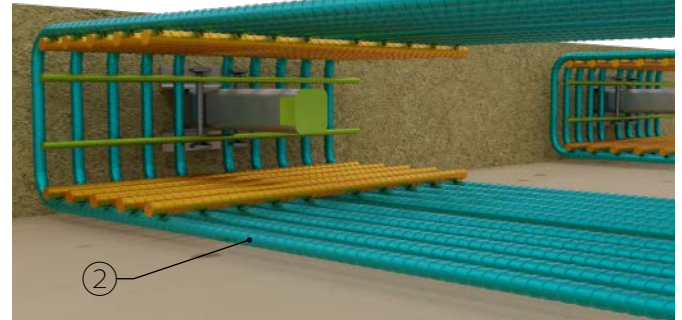


**Attention!** Fire protection collar BSM must be attached to the dowel and the dowel must be pushed into the sleeve up to the stop.

*Optionally* – Sealing of the joint with fire protection sealant on the upper and lower sides of the joint. When selecting the height of the joint material, the required thickness of the sealant should be considered.

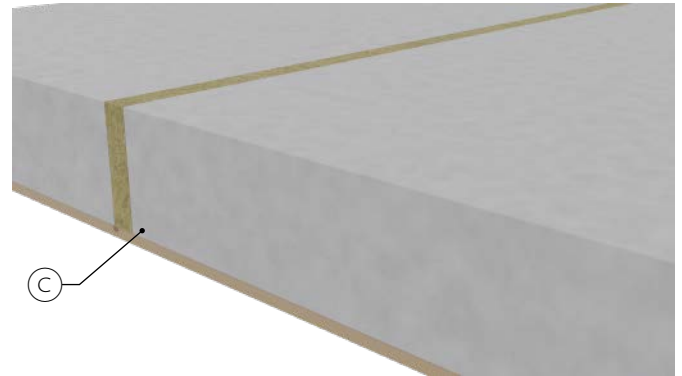
## Step 5

Installation of additional reinforcement ② on dowel side according to requirements in Section 4 Annex A - Additional reinforcement.



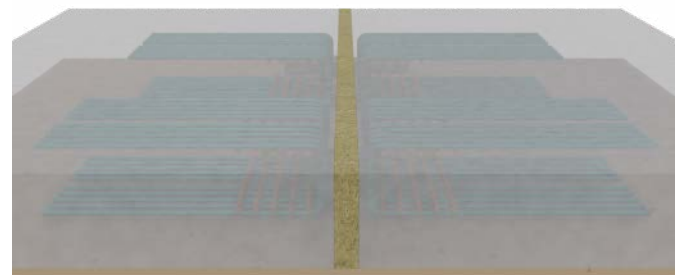
## Step 6

Concreting ④ second stage



## Step 7

Built-in shear dowel. Depending on the specified fire resistance class of the component, a fire protective technical sealing of the joint could be required.



## Notes for the construction site

The elements must be handled with care during unloading and storage on site. Damaged elements must not be installed. The installation direction must be observed when installing the elements (according to the product labels). The elements must not be cut or shortened, and no product components must be removed. The correct installation of the element must be checked by the responsible engineer as part of the reinforcement inspection. Further information and notes in Section 4 Annex A - Additional reinforcement and Section 2.1 Thermal resistance.