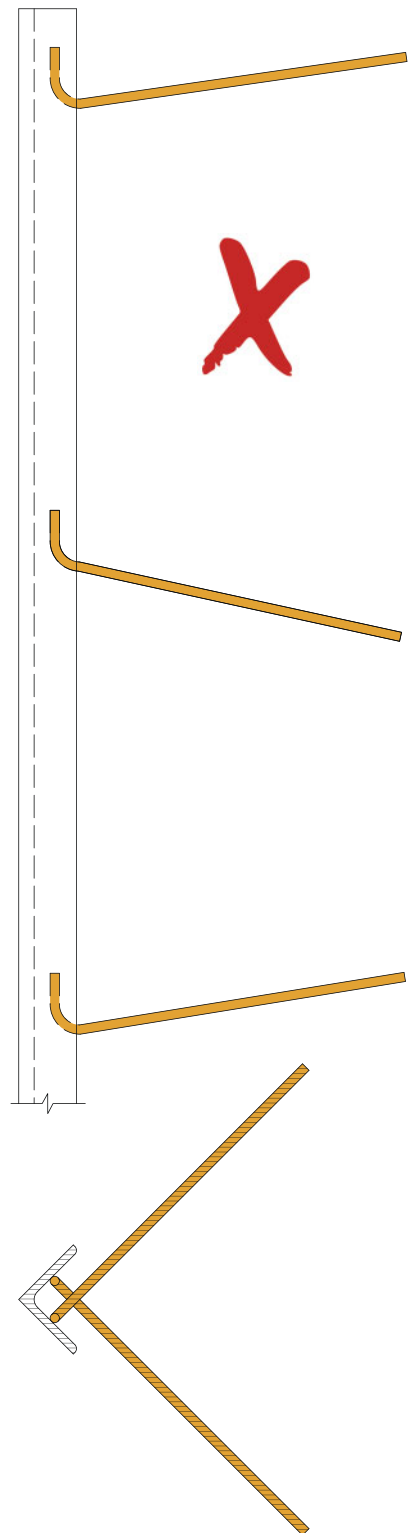
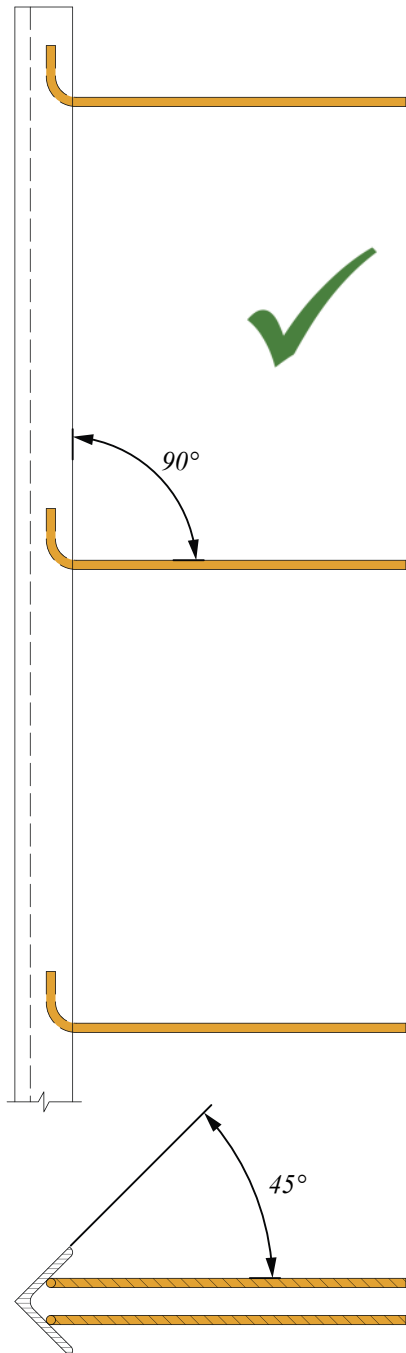


## Installing Corner Protectors

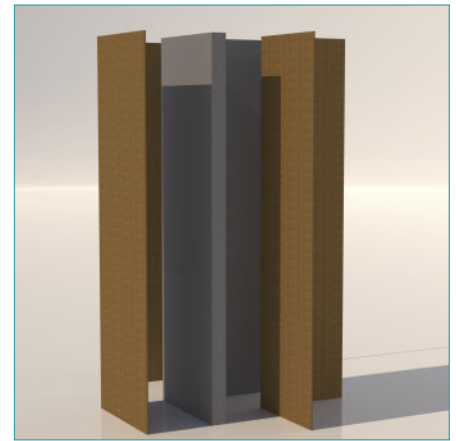
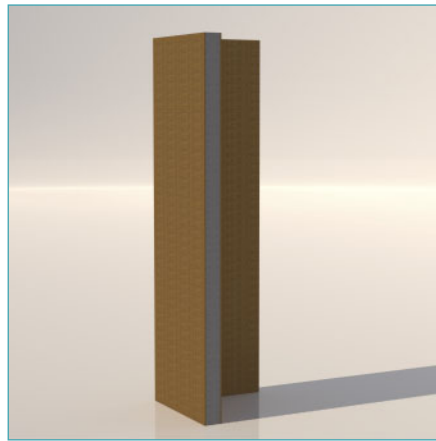
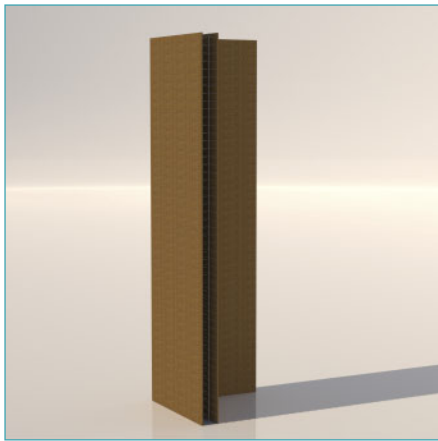
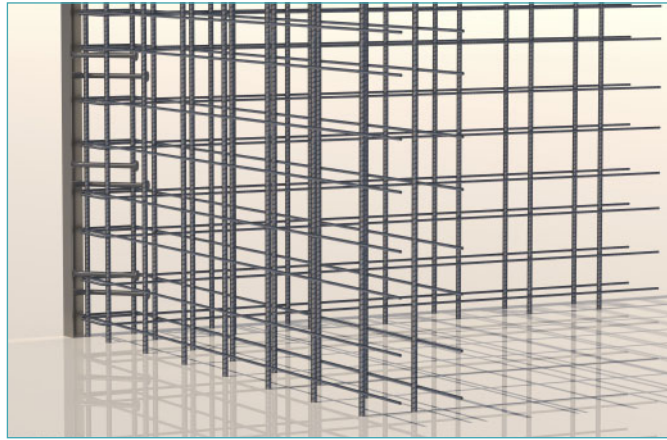
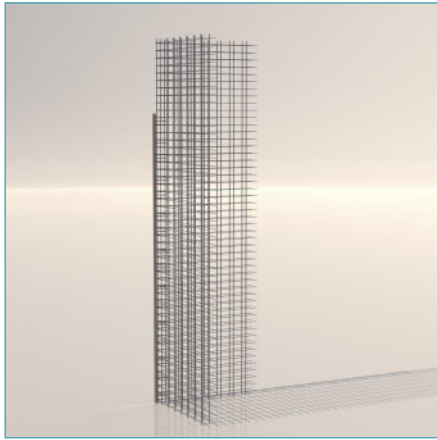
### Installation of Corner Protectors at the precast factory or on the construction site

During transportation, the elements may experience some deformation, in which case the user needs to straighten them to ensure that they do not negatively impact the straightness of the concrete edge.

Corner Protectors are installed to planned positions before casting of concrete. The precise position of Corner Protector is indicated in the installation drawings. Before installing SKT Corner Protector and UKT Corner Protector models to the formwork, rebar anchor bars must be bent out first.



Corner Protector can be attached to the formwork first or it can be attached to the reinforcement cage before installation to formwork. It must be fixed without any possible displacement during casting. Corner Protector can be fixed to the formwork with nails, glue, screws, and double-sided tape. Corner Protectors can be supplied upon request with nail holes for easy fixing.



It is prohibited to bend and cut the headed studs or cut the anchor bars to make the angle bar fit the reinforcement.

The anchoring length of headed studs or anchor bars is based on the design. Bending or cutting the headed studs or anchor bars reduces the capacities of Corner Protectors.

The concrete under the heads of headed studs or anchor bars, as well as under the angle bar, should be properly compacted. If a vibrator is used for compacting, contact between the angle bar and the vibrator must be avoided.

