

COPRA® Anchoring Coupler

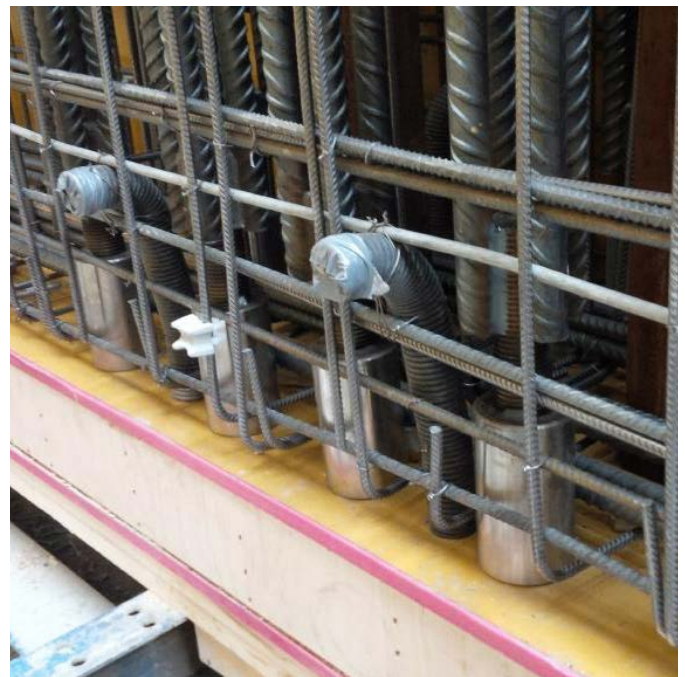
For Smart Bolted Connections

- Multi-purpose anchoring system for all bolted connections.
- Simplifies the process of installing bolted connections.
- Prevents bars from protruding from the formwork.
- Quick and easy installation into concrete with the help of standard accessories.
- Transfers forces after precast elements are erected and nuts are tightened.

The COPRA® Anchoring Coupler is a rebar anchor with female threads for bolted connections in precast concrete structures. COPRA® is mainly used in foundation-to-column and column-to-beam connections in combination with HPKM® / BOLDA® Column Shoes or BECO® Beam Shoes.

COPRA® Anchoring Couplers transfer tensile, compression, and shear forces through the connection during erection and in the final stage. COPRA® can be adapted to all types of concrete structures.

Hidden COPRA® Anchoring Couplers with removable threaded bars avoid the risk of protruding parts being damaged during construction. The joint between the two precast concrete parts is grouted to finalize the connection.



www.peikko.com