



FORERUNNERS IN BUILDING CIRCULAR

A white circular graphic containing the text "Circular economy" and a vertical line.

**Circular
economy** |



Preventing
Minimizing
Reusing
Recycling



RAW MATERIALS ARE TOO PRECIOUS TO BE WASTED

Coming up with industrial solutions for dismantling and reusing – while retaining component information and business, economical and market value.

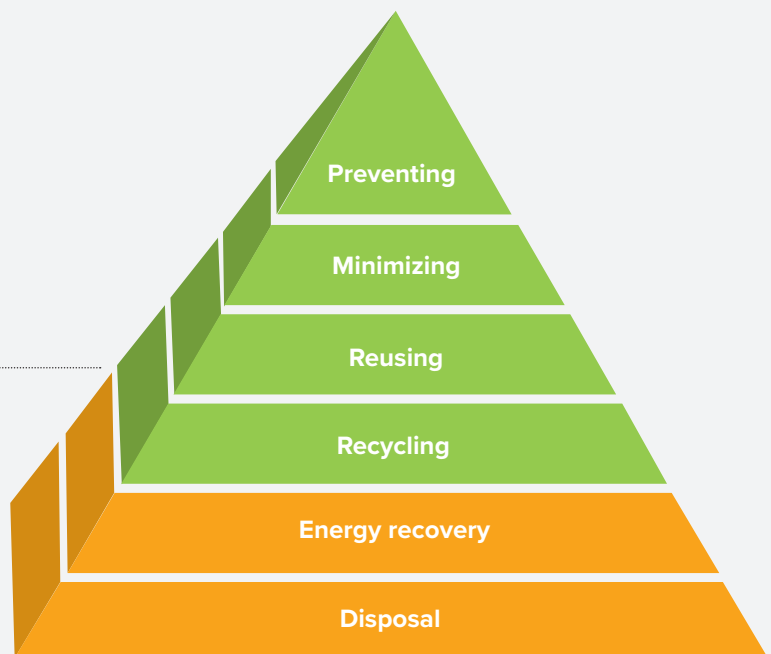
Peikko has always provided a faster, safer and more efficient way to design and build. Many of our solutions are already compatible with circular economy principles. With Peikko, you can meet the environmental demands – and retain the value of building components for rebuilding in the future.

VALUE

This is where Peikko makes an impact.

VOLUME

This is where the most efforts in circular economy focus.



“Building circular is not only possible. It’s also a good business.”

Kasper Guldager Jensen, Senior Partner 3XN, Director GXN and Board Member Peikko Group

“Circle House demonstrates that we today have working technologies to flip the picture; from the current 10% circular material flow into a 90% circular material flow in building industry.”

Johannes Greisen, Senior Manager Circular Economy, Peikko

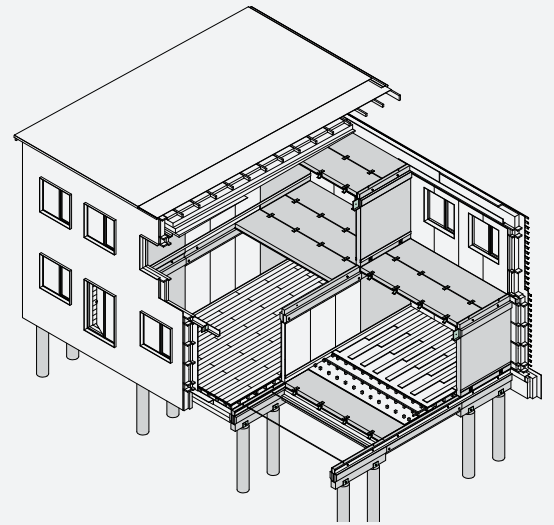
CIRCLE HOUSE PROVING THE CONCEPT

1:1 demonstrator built in Copenhagen. Full scale housing project is to be built in Aarhus, Denmark. Circle House is a fully circular common residential housing project. Peikko's circular construction method ensures that the building materials will have a high reuse value in the future.

- Four types of precast slab and wall elements
- Simple mechanical connections

Designed for easy assembly in the first place, disassembly, transport, re-design and re-assembly!

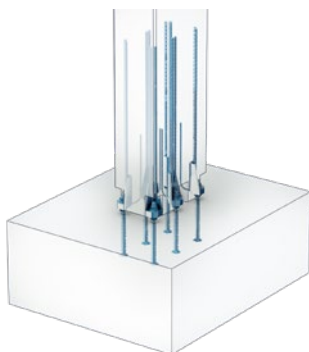
Connections by Peikko, architecture by GXN / 3XN, Lendager and Vandkunsten. Groundbreaking full scale in 2020.



PEIKKO CIRCULAR SOLUTIONS

Bolting and unbolting makes full size building components circular

HPKM® Column Shoes are used for circular columns and our **SUMO® Wall Shoes** are used for circular walls. These products features decades in business with a good reputation and a high level of documentation. The bolted connections have now been extended with a robust release system also covering the adjacent reinforcement and a more sophisticated set of grout types and processes to ensure fast, safe and efficient building today – and re-building in the future.



HPKM® Column Shoes



SUMO® Wall Shoes

Hybrid construction with DELTABEAM®

With **DELTABEAM®** we create flexibility, so you can use building materials where they make most sense. DELTABEAM® supports any kind of slab – concrete hollow core, steel, cast in situ or timber – and opens up new architectural horizons in terms of aesthetics, utility and durability with more livable space and reduced emissions.



Lightening environmental footprint with DELTABEAM® Green

We are proudly introducing **DELTABEAM® Green** with more than 90% of recycled steel.

Minimized material use compared to traditional steel structures. Drastically reduced use of virgin material. Full compatibility with LEED, BREEAM and EPD and highly improved scores for your building project!





**EFFICIENT OR
ENVIRONMENTAL?**



WE SAY BOTH.